



MARSHALLWHITE

13 Mountain Street
South Melbourne



Original Elegance, Outstanding Opportunity

Behind a street presence that hints at this classical Victorian era home's originality, a series of functional spaces reveals an immediate readiness to occupy and or update/extend (STCA). Set on a corner block, this wide single front provides for easy, low maintenance living. Large proportions throughout include two bedrooms, central living/dining area featuring open fire place and split system heating and cooling. Functional kitchen and bathroom offer a fantastic opportunity that suggests rewarding scope to create present-day spaces while attracting plenty of natural light.

13mountainstreet-southmelbourne.com

2 1

Auction Saturday 5th May at 3.30pm

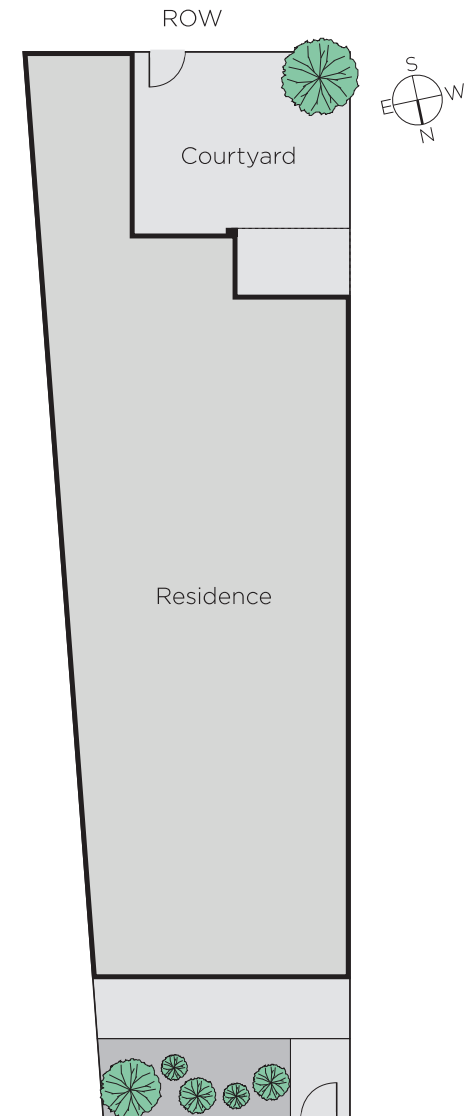
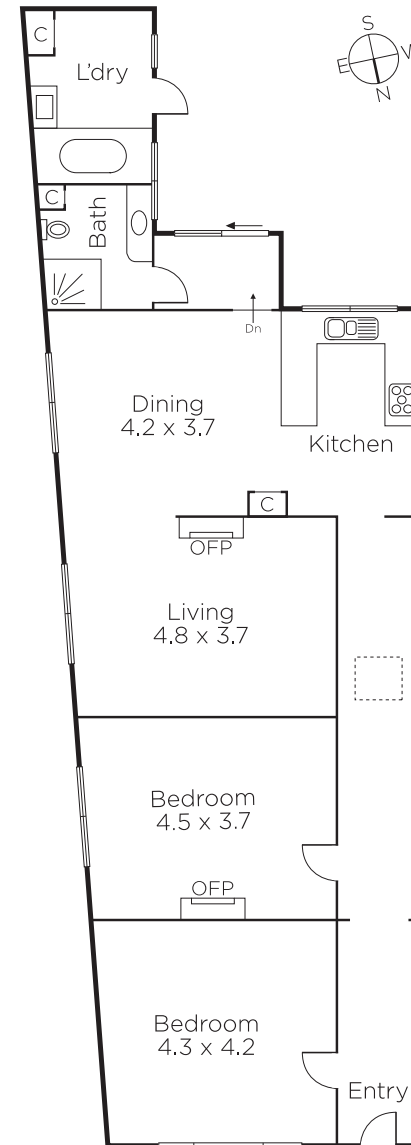
Oliver Bruce
0409 856 599

Sarah Wood
0408 902 827

John Manton
0411 444 930


MARSHALLWHITE

101 Dundas Place, Albert Park



Disclaimer: Information provided is believed to be accurate as at the date of printing, no responsibility is taken for any errors or omissions. It is your responsibility to obtain independent, professional advice. Personal information collected from you is for security purposes and to contact you should the property sell prior to auction. We may use this information to provide you with other real estate services including referrals to authorised financial services providers. Visit our website at www.marshallwhite.com.au for our privacy policy.