




MARSHALLWHITE

13 Leopold Street
Glen Iris





Timeless Elegance in Desirable Locale

Brilliantly designed with a classic aesthetic and an emphasis on natural light, this stunning contemporary residence's impeccably stylish and impressively proportioned dimensions deliver an exceptional environment for every stage of family life in a tranquil leafy pocket walking distance to schools, Harold Holt Pool and High St shops, cafes and trams. Framed by beautiful landscaped gardens, the double door entry reveals a generosity of space in the entrance hall and formal sitting room or retreat with fitted study area overlooking a picturesque central courtyard. Pale timber floors flow through the spacious gourmet kitchen appointed with stone benches and an expansive living and dining room with gas fireplace opening to a private hedged north-facing garden oasis with heated pool. The main bedroom with lavish en-suite and walk in robe enjoys its own space downstairs while a fabulous children's zone upstairs comprises three additional double bedrooms with walk in robes and a stylish bathroom. This captivating domain also includes plantation shutters, alarm, ducted heating, ducted vacuum, powder-room, laundry, storage and internally accessed double garage. Land size: 570sqm (approx.)

4  2  2 

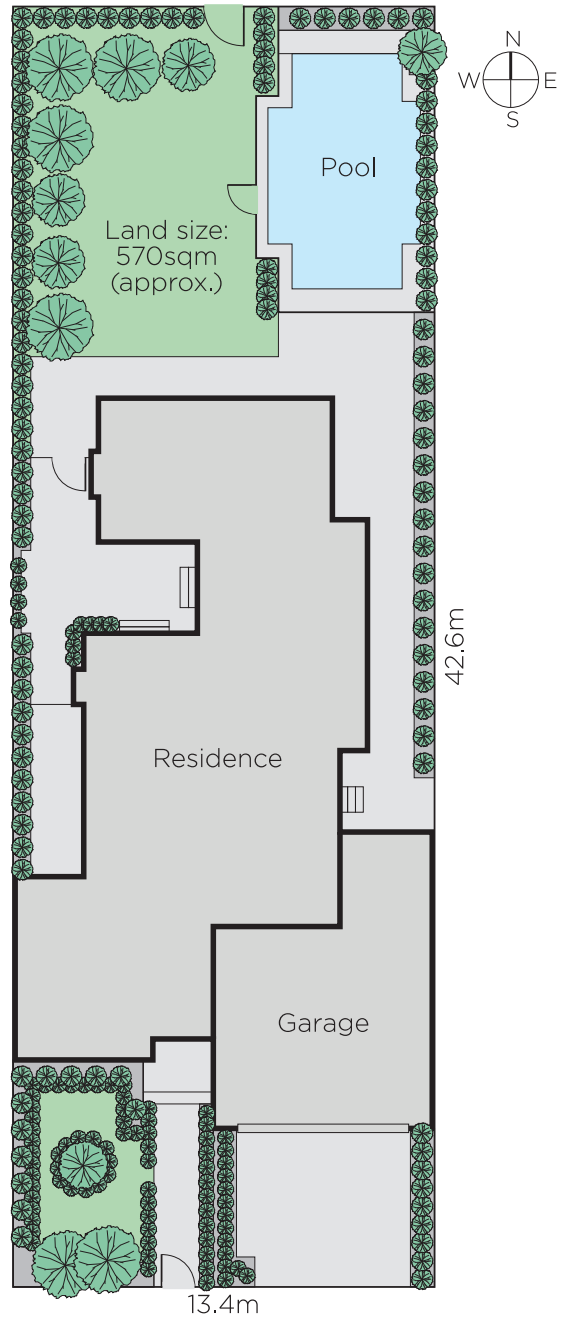
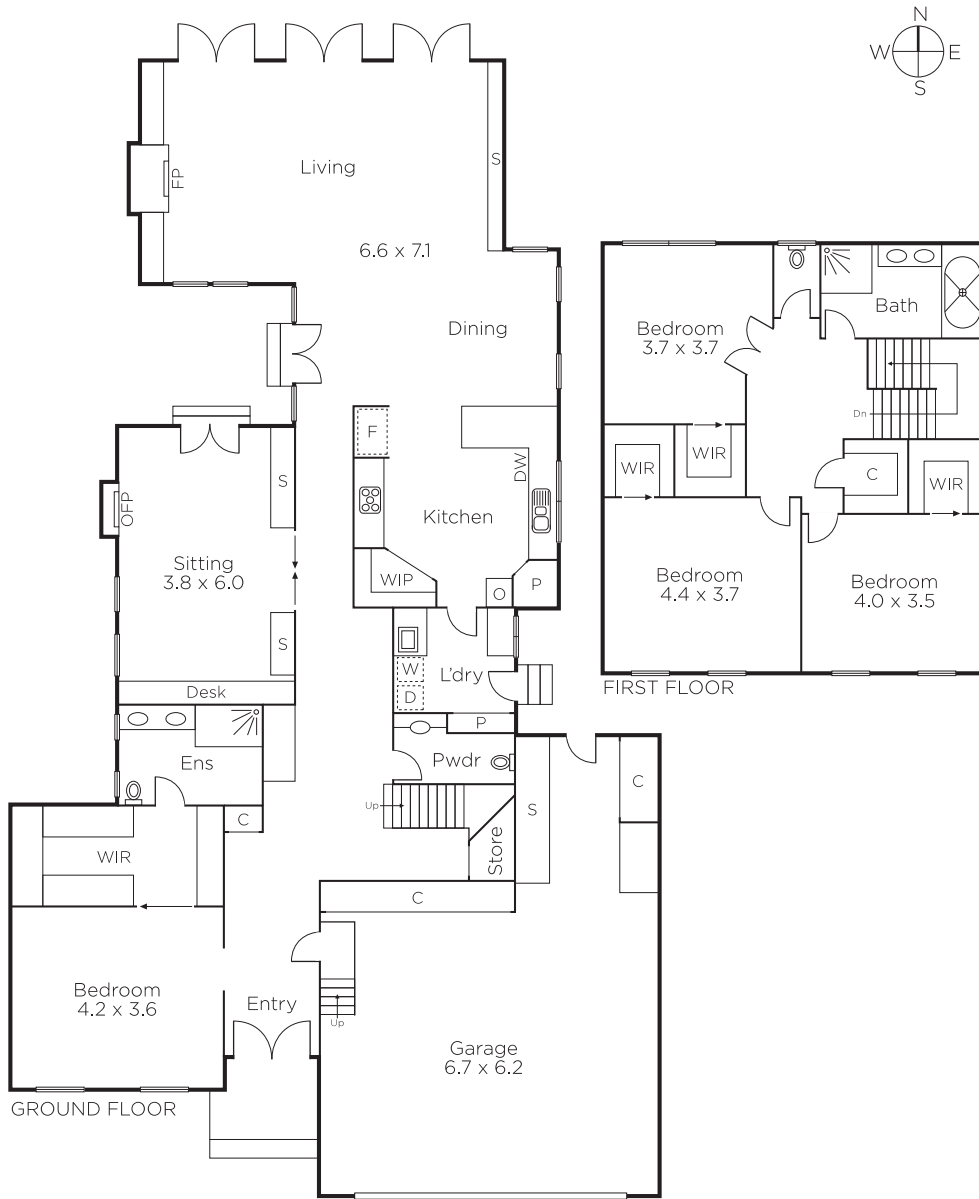
Auction Saturday 17th November at 12.30pm

Daniel Wheeler
0411 676 058

James Tomlinson
0408 350 684


MARSHALLWHITE

1111 High Street, Armadale



Disclaimer: Information provided is believed to be accurate as at the date of printing, no responsibility is taken for any errors or omissions. It is your responsibility to obtain independent, professional advice. Personal information collected from you is for security purposes and to contact you should the property sell prior to auction. We may use this information to provide you with other real estate services including referrals to authorised financial services' providers. Visit our website at www.marshallwhite.com.au for our privacy policy.