




MARSHALLWHITE
ONE

1/3 Leason Street
Kew East



Renovated with Breath-Taking Outdoor Living

Genuinely unique, this superbly renovated unit presents buyers with incredible indoor-outdoor connections, stunning views and three bedrooms. Comprehensively renovated, the home's kitchen/meals boldly reveals Caesar Stone waterfall benches, premium appliances, an integrated refrigerator and innovative storage solutions that make daily life a joy. Huge floor-to-ceiling windows create a wonderful outlook across Hays Paddock as the kitchen flows to a large lounge/dining with a marble fire place and French Doors leading to an incredible 42sqm (approx.) of north-facing, terrazzo-tiled courtyard. The bathroom is fully-tiled and 'on trend' with twin vanities, whilst there are large robes in two bedrooms, plus a European laundry and parking. Enjoy proximity to Hays Paddock as well as terrific local shops and cafes, buses within a few metres, trams along High St and Kew Junction is just a few minutes away from this first class location.

1-3leasonstreet-keweast.com

3 1 1

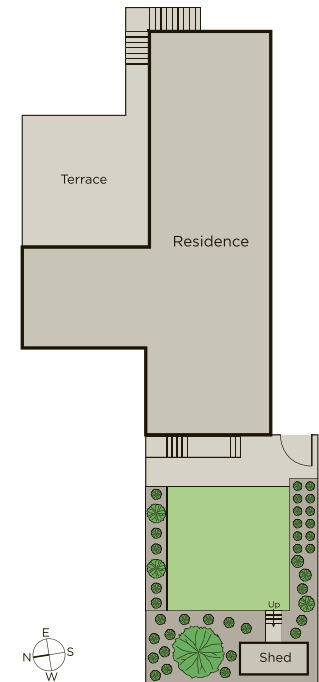
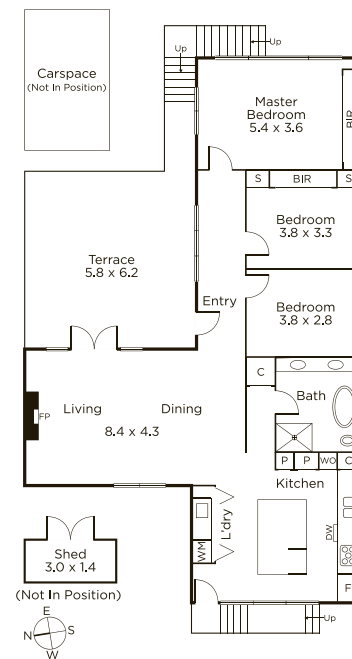
Auction Saturday 2nd March at 10am

Ash Sachdev 0402 425 661

James Hill 0402 421 154

801 Glenferrie Road Hawthorn

9822 9999 mwone.com.au



MARSHALLWHITE
ONE

Disclaimer: Information provided is believed to be accurate as at the date of printing, no responsibility is taken for any errors or omissions. It is your responsibility to obtain independent, professional advice. Personal information collected from you is for security purposes to contact you should the property sell prior to auction. We may use this information to provide you with other real estate services including referrals to authorized financial services providers. Visit our website at www.mwone.com.au for our privacy policy.