




MARSHALLWHITE

13 Edwards Avenue
Port Melbourne



Family Living Opposite Parklands

Beautifully renovated and extended, this distinctive c1940's Bank house superbly combines the charm of the era with contemporary style within a sensational north-facing garden oasis. Spotted Gum floors flow through the hallway, sitting room, dining area and expansive living room with a gourmet Smeg kitchen opening to a glorious private north garden. Light-filled accommodation upstairs comprises a main bedroom with robes and en-suite, three additional bedrooms and a stylish bathroom. Perfectly situated directly opposite parkland and near the beach, schools and light-rail it also includes wine cellar, laundry, 3rd toilet, attic storage, bore water and watering system and garage/store-room.

13edwardsavenue-portmelbourne.com

4 2 2

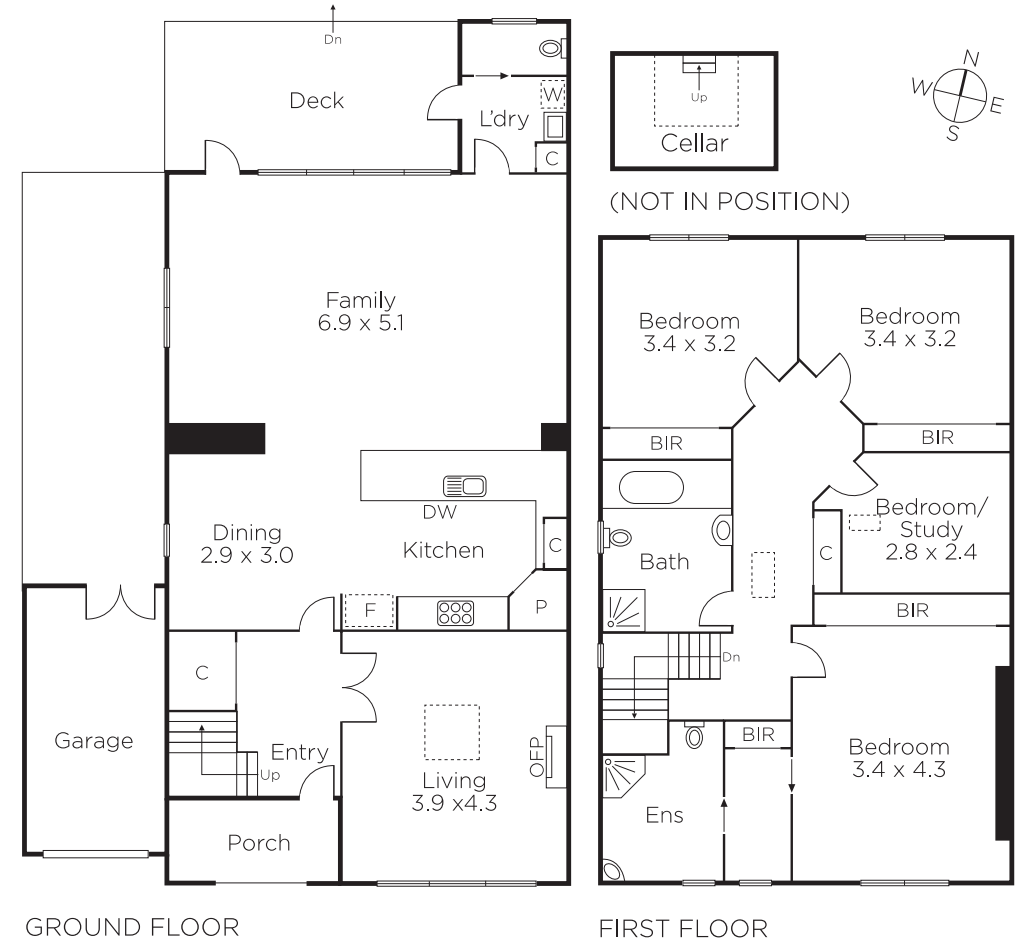
Auction Saturday 29th April at 1.30pm

Justin Holod 0411 669 161

Nicholas Beks 0417 511 548

101 Dundas Place Albert Park
marshallwhite.com.au


MARSHALLWHITE



Disclaimer: Information provided is believed to be accurate as at the date of printing, no responsibility is taken for any errors or omissions. It is your responsibility to obtain independent, professional advice. Personal information collected from you is for security purposes and to contact you should the property sell prior to auction. We may use this information to provide you with other real estate services including referrals to authorised financial services' providers. Visit our website at www.marshallwhite.com.au for our privacy policy.