



MARSHALLWHITE
ONE

1/3 Crescent Road
Camberwell



Delightful Villa Moments from the Junction

A pleasure to live in, as it introduces beautiful leafy vistas and streams of natural light, this lovely, two bedroom villa achieves a warm and welcoming sense of relaxed designer style, just moments from Camberwell Junction. Large windows allow the warmth of sunlight and an attractive garden backdrop to compliment gorgeous polished timber floors in a lounge/dining and semi-attached kitchen/meals that are both appealing. The home also enjoys the privilege of a rear garage, terrific storage that includes robes in each bedroom, a large bathroom with independent bath and shower, plus a separate WC and a laundry. Suited to first home buyers, downsizers, busy urban couples and savvy investors, such proximity to Camberwell Junction is not to be ignored. The cafes, the restaurants, the shopping, the cinemas and all the public transport options form a formidable lifestyle equation and ensure that this is a location of enduring lifestyle appeal.

1-3crescentroad-camberwell.com

2 1 1

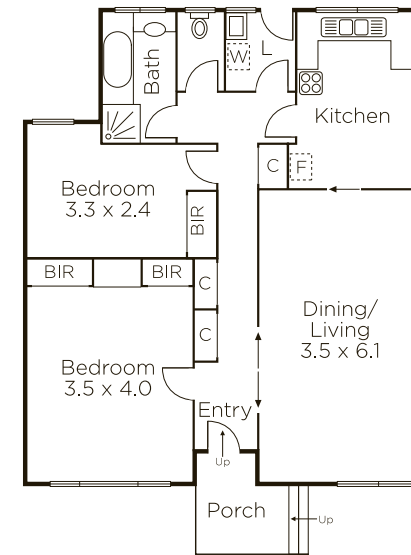
Auction Saturday 15th December at 2.30pm

Ash Sachdev 0402 425 661

801 Glenferrie Road Hawthorn

Davide Lettieri 0414 018 707

9822 9999 mwone.com.au




MARSHALLWHITE
ONE

Disclaimer: Information provided is believed to be accurate as at the date of printing, no responsibility is taken for any errors or omissions. It is your responsibility to obtain independent, professional advice. Personal information collected from you is for security purposes to contact you should the property sell prior to auction. We may use this information to provide you with other real estate services including referrals to authorized financial services providers. Visit our website at www.mwone.com.au for our privacy policy.