




MARSHALLWHITE

13 Belvedere
Kew





A Studley Park Modernist Architectural Masterpiece

A c1957 residence of architectural significance, one of the masterpieces designed by the renowned modernist architect Anatol Kagan; whose styles typically incorporated large windows, open-plan designs with lower-level bedrooms with living areas above, passive solar orientation, north-facing balconies & terraces plus built-in furniture & integrated garages, flat-roofs & stone feature walls integrating the gardens with its surroundings. This home typifies these characteristics over four levels with the entrance level featuring an open foyer, study, bathroom, indoor pool & leading up to combined living & dining with timber kitchen/meals all flowing to upper balcony. The middle level has three bedrooms, main with WIR and family bathroom and access to garage; whilst the lower ground level has a self-contained studio with a further two bedrooms & office opening to terraced/integrated garden garden. Other features include scope to update, ducted heating, a double carport and double garage. This exceptional home enjoys an elevated position delivering privacy and leafy valley outlooks in the Studley Park precinct - offering a tranquil & sublime living environment, close to Kew Junction, prestige schools, transport and the Yarra Parklands.

13belvedere-kew.com

5  3  3 

Auction Saturday 13th May at 12.30pm

Daive Lettieri 0414 018 707

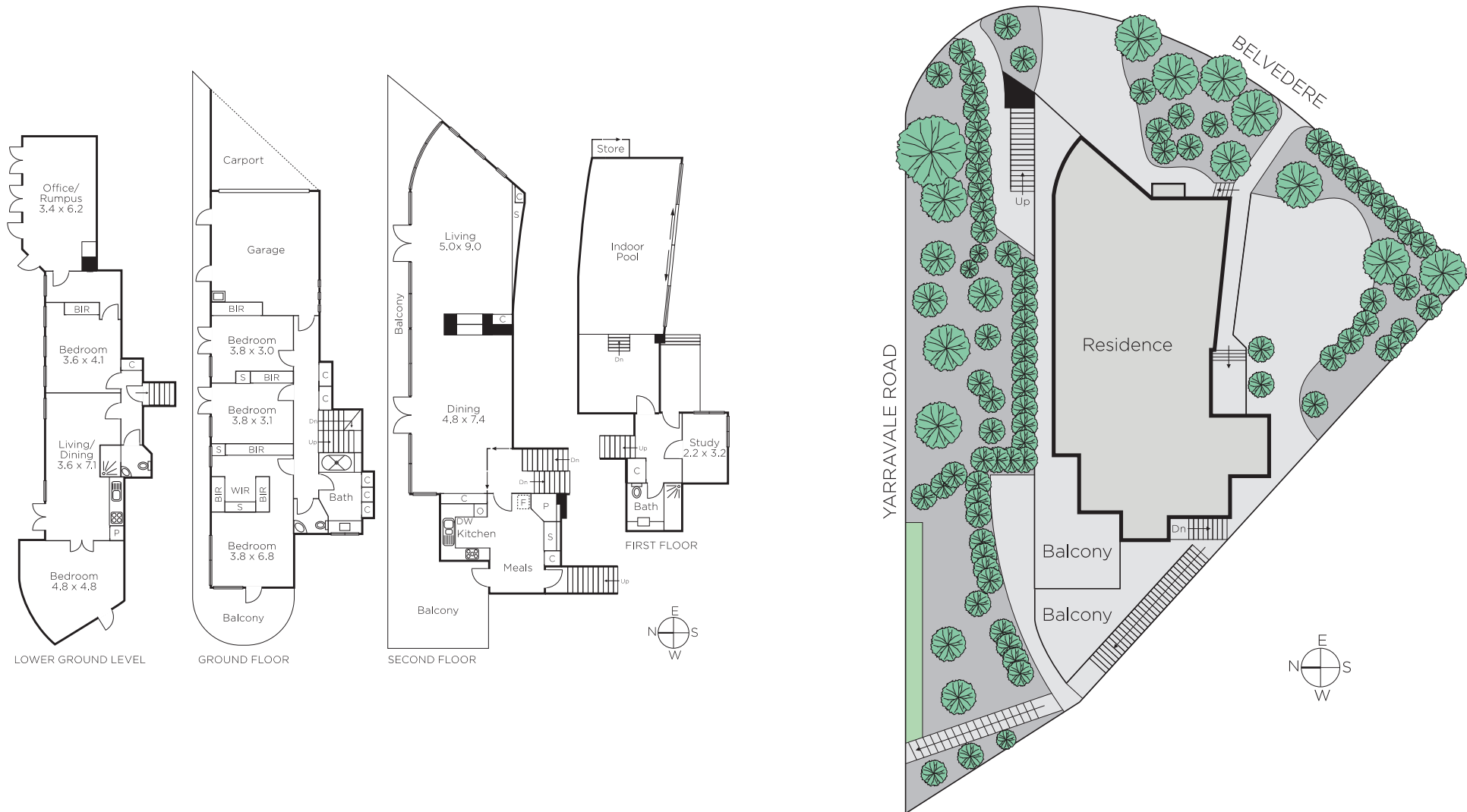
Hamish Tostevin 0408 004 766

James Tostevin 0417 003 333

801 Glenferrie Road Hawthorn

marshallwhite.com.au


MARSHALLWHITE



Disclaimer: Information provided is believed to be accurate as at the date of printing, no responsibility is taken for any errors or omissions. It is your responsibility to obtain independent, professional advice. Personal information collected from you is for security purposes and to contact you should the property sell prior to auction. We may use this information to provide you with other real estate services including referrals to authorised financial services' providers. Visit our website at www.marshallwhite.com.au for our privacy policy.