



13 Aquila Street,
Balwyn North



Leading Light in Style, Space and Luxury

Watch the sun setting over the city and admire the sweeping valley views from this spectacular contemporary home offering an outstanding family lifestyle close to Doncaster Rd trams, Balwyn North Village and Yarra parklands. Gallery-style living spaces, panoramically proportioned glass walls and state-of-the-art finishes create an unforgettable environment for living and entertaining amidst stylish night-lit pool and garden oasis. Take the effortless journey via the lift from the 6 car basement and indulge yourself in the luxuriously large living spaces and beautifully addressed 4 bedroom/4 bathroom accommodation (including basement level teen/guest suite and stunning city-view main suite). A multitude of options are available for relaxation and recreation, stretch out in the superb formal lounge, run a home-based business in the fitted office, watch a film in the home-theatre, gather around the marble island bench in the Miele kitchen (2nd chef's kitchen), unwind in expansive casual areas or wine and dine on the poolside deck. A visually impactful home with matte Oak floors, ducted heating and cooling, WI linen, storerooms, gas fire, intercom gate, auto-garage and easy access to the freeway, buses and excellent schools.

4  4  6 

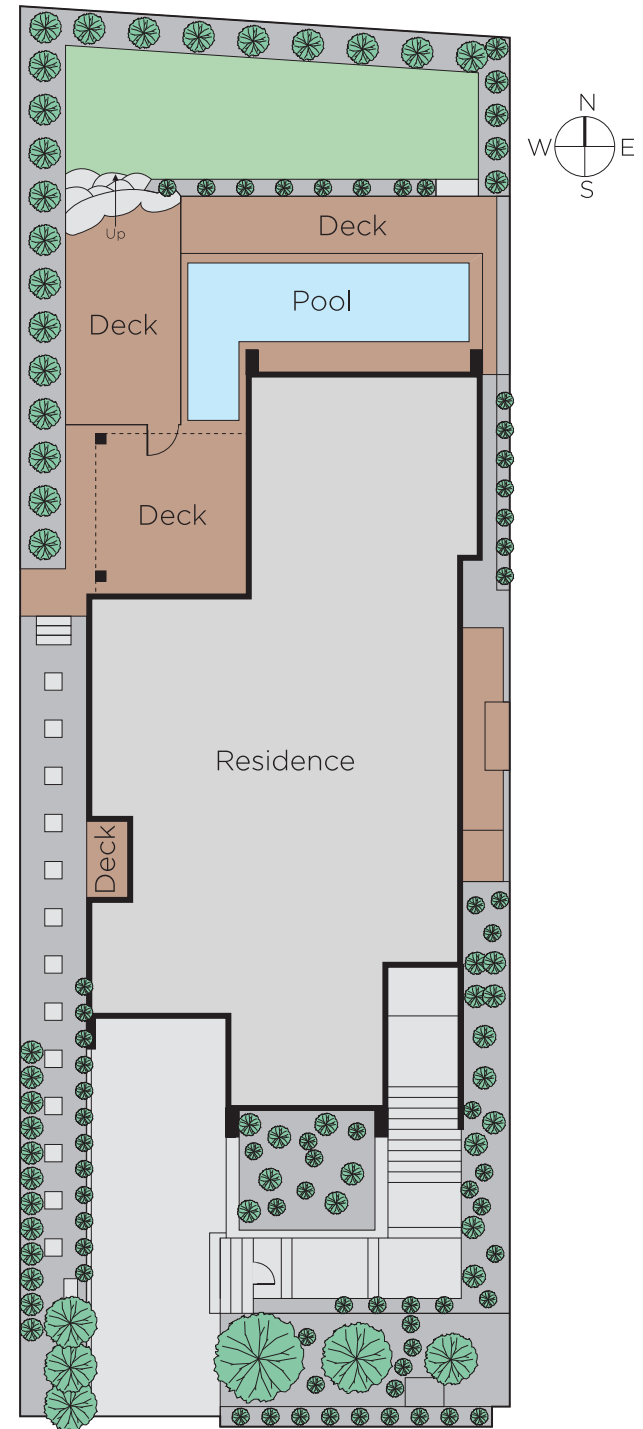
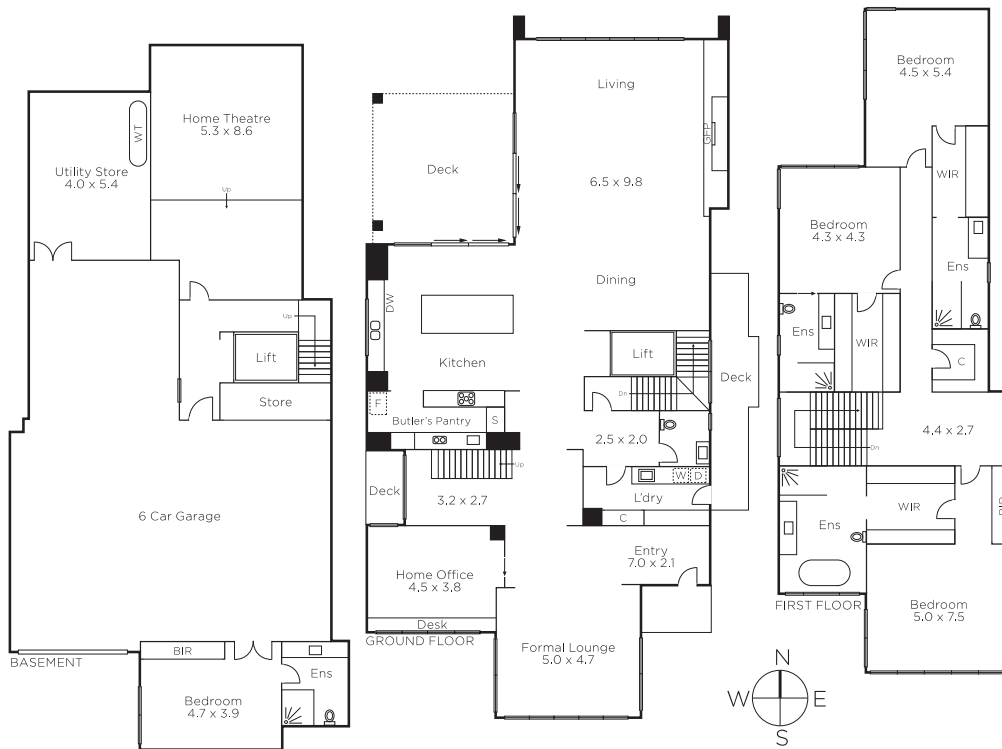
Auction Saturday 27th October at 10am


MARSHALLWHITE

KAY & BURTON

Tori McGregor 0400 633 992

Eva Gyrodi 0411 850 171



Disclaimer: Information provided is believed to be accurate as at the date of printing, no responsibility is taken for any errors or omissions. It is your responsibility to obtain independent, professional advice. Personal information collected from you is for security purposes and to contact you should the property sell prior to auction. We may use this information to provide you with other real estate services including referrals to authorised financial services' providers. Visit our website at www.marshallwhite.com.au for our privacy policy.