



128

  
MARSHALLWHITE

128 Argyle Street  
St Kilda





## Impressive Family Appeal

Enviably situated near Chapel St, Carlisle St, trams, Alma Park and schools, the unexpectedly spacious dimensions of this superbly renovated period residence cater to every stage of family life with effortless style. Timber floors flow through the entrance hall, generous living/dining spaces and modern kitchen opening to the private north garden. A large home office/2nd living includes a separate entrance. The downstairs main bedroom with designer en-suite and walk in robe is complemented by 3 additional bedrooms (robes), stylish bathroom and retreat. Includes powder-room, laundry, storage, water tank and OSP.

[128argylestreet-stkilda.com](http://128argylestreet-stkilda.com)

4 2 1

Auction Saturday 28th April at 10.30am

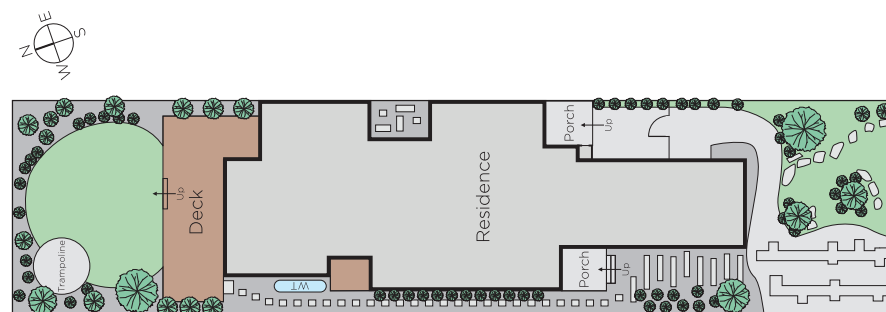
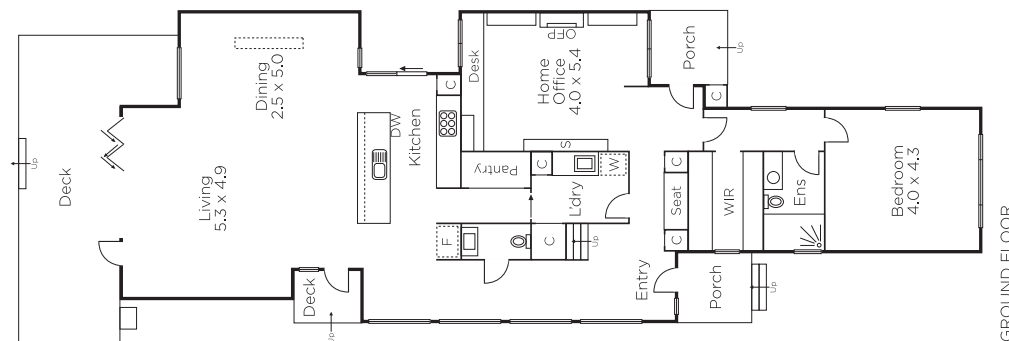
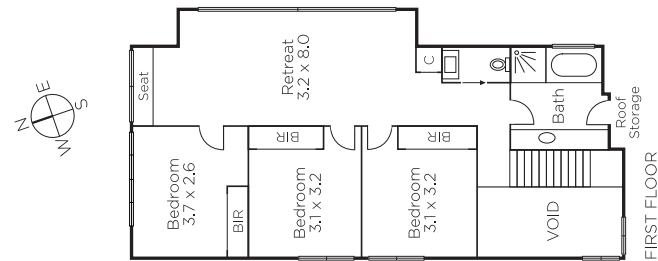
**Sam Hobbs**  
0404 164 444

**Justine Hannemann**  
0412 266 218

**Dean Gilbert**  
0418 994 939

  
**MARSHALLWHITE**

225 Bay Street, Brighton



Disclaimer: Information provided is believed to be accurate as at the date of printing, no responsibility is taken for any errors or omissions. It is your responsibility to obtain independent, professional advice. Personal information collected from you is for security purposes and to contact you should the property sell prior to auction. We may use this information to provide you with other real estate services including referrals to authorised financial services providers. Visit our website at [www.marshallwhite.com.au](http://www.marshallwhite.com.au) for our privacy policy.