



MARSHALLWHITE
ONE

1/26 Cornell Street
Camberwell



Stylish and Light-Filled Harmony

A low maintenance, joy to live in, this vast and bright, two bedroom north-facing villa is an up-lifting residence that enjoys the feel of a free-standing home, but without any of the tiresome up-keep. Polished timber floors create an eye-catching contrast to the home's crisp white interior, as a perfectly-proportioned gas-heated lounge/dining flows delightfully to its semi-attached kitchen/meals, all with large north-facing windows and garden outlooks. Also blessed with a lock-up garage, the home's bedrooms are substantial and equipped with robes, whilst the bathroom accommodates independent bath and shower, plus there is a laundry and rear courtyard. Within walking distance of Riversdale Rd shops, cafes, trams and the vast expanses of Wattle Park, this is a wonderfully diverse location that is also just moments from Camberwell Junction.

1-26cornellstreet-camberwell.com

2 1 1

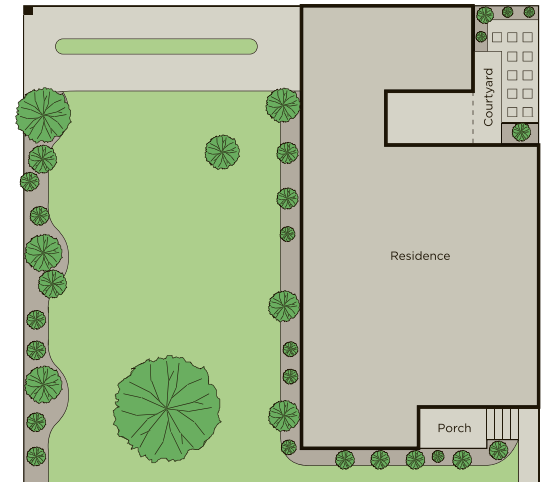
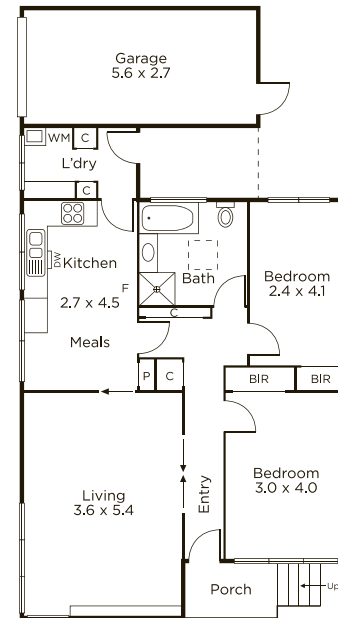
Auction Saturday 23rd March at 12.30pm

James Hill 0402 421 154

Ash Sachdev 0402 425 661

801 Glenferrie Road Hawthorn

9822 9999 mwone.com.au



MARSHALLWHITE
ONE

Disclaimer: Information provided is believed to be accurate as at the date of printing, no responsibility is taken for any errors or omissions. It is your responsibility to obtain independent, professional advice. Personal information collected from you is for security purposes to contact you should the property sell prior to auction. We may use this information to provide you with other real estate services including referrals to authorized financial services providers. Visit our website at www.mwone.com.au for our privacy policy.