



MARSHALLWHITE
ONE

1/25 The Avenue
Malvern East



North-Facing Ease on The Avenue

This flawlessly presented one bedroom apartment combines an up-lifting northern orientation with a refreshing lack of the need for maintenance and has been renovated to suit lifestyle-loving first home buyers and the savviest of investors. Large windows with plantation shutters frame leafy a outlook in this home where Caesar Stone kitchen benches and soft close cabinetry indicate a commitment to style that is reinforced by a pristine bathroom, reverse cycle air conditioning and mirrored robes in the bedroom. Super convenient, there is a parking space at the front door and laundry facilities in this well-maintained block. A short walk along a broad tree-lined street sees you in the midst of Waverley Rd's renowned strip of cafes and shops, whilst city-bound transport is easily accessed and proximity to both Monash University and pretty parks are added drawcards.

1-25theavenue-malverneast.com

1 1 1

Auction Saturday 10th November at 12pm

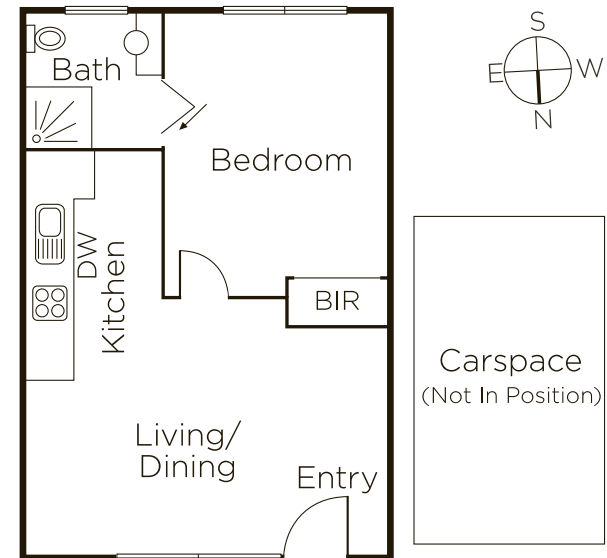
Jack Nicol 0400 774 428

Nicholas Brooks 0419 883 136

Joseph Ben-Danan 0408 135 948

1111 High Street Armadale

9822 9999 mwone.com.au



MARSHALLWHITE
ONE

Disclaimer: Information provided is believed to be accurate as at the date of printing, no responsibility is taken for any errors or omissions. It is your responsibility to obtain independent, professional advice. Personal information collected from you is for security purposes to contact you should the property sell prior to auction. We may use this information to provide you with other real estate services including referrals to authorized financial services providers. Visit our website at www.mwone.com.au for our privacy policy.