



MARSHALLWHITE

1/240 Highfield Road
Camberwell



Sun-Drenched Single Level Simplicity

Enviably situated on the corner of Merton St walking distance to Lynden Park, Leo's Supermarket, Burwood station and Toorak Rd trams, this superb fully renovated single level 3 bedroom residence, 1 of only 2 is bathed in northern light. The generous living and dining room featuring timber floors and a sleek gourmet kitchen boasting stone benches overlooks a private courtyard. The three spacious bedrooms, all with built in robes are accompanied by a stylish ensuite/bathroom and powder-room. Offering ideal low maintenance living, it includes a separate laundry and double garage.

1-240highfieldroad-camberwell.com

3 1 2

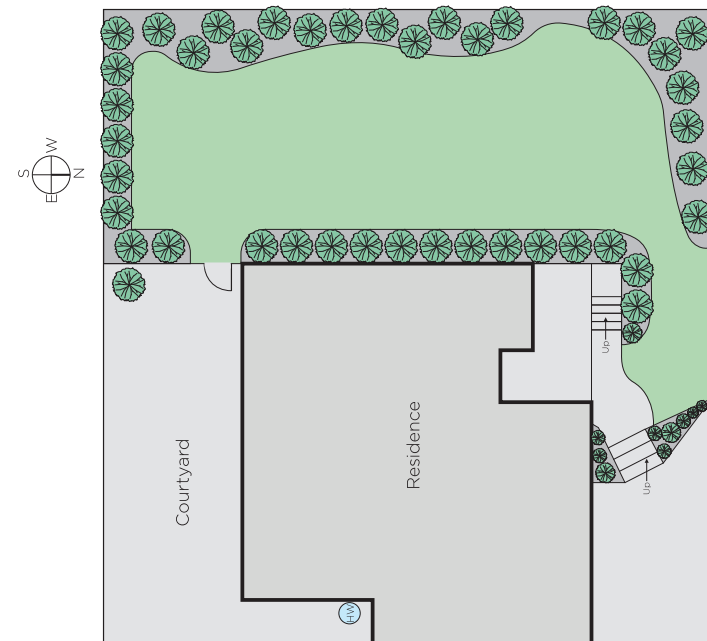
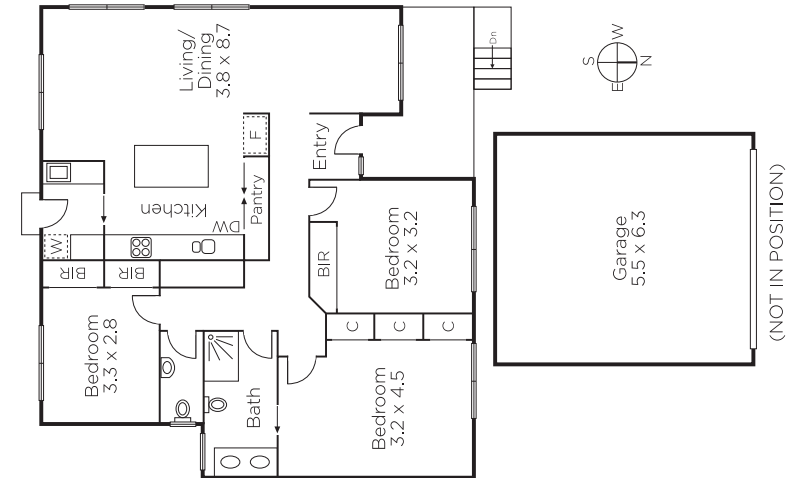
Auction Saturday 2nd June at 10.30am

Nicholas Franzmann
0412 247 175

Mark Sproule
0408 090 205


MARSHALLWHITE

801 Glenferrie Road, Hawthorn



Disclaimer: Information provided is believed to be accurate as at the date of printing, no responsibility is taken for any errors or omissions. It is your responsibility to obtain independent, professional advice. Personal information collected from you is for security purposes and to contact you should the property sell prior to auction. We may use this information to provide you with other real estate services including referrals to authorised financial services providers. Visit our website at www.marshallwhite.com.au for our privacy policy.