




MARSHALLWHITE
ONE

1/24 Belford Street
St Kilda



'The Belford': Superb Art Deco Classic

Unique and beautifully presented, this two bedroom, red brick, Art Deco apartment is rich in original character with towering ceilings, in the cosmopolitan heart of St Kilda. Large Deco windows introduce attractive vistas, while two separate courtyards create an enviable sense of al fresco living in this home with a striking and angular modern kitchen/dining/living that is warmed by a fire place and opens to a sunny north-facing courtyard. One of the bedrooms is also warmed by a fire place with its own flow to a private deck and garden, whilst the other is eye-catching with a classically Deco curved window. Perfectly positioned for your inner bayside lifestyle aspirations, you can include Big Mouth, Dogs' Bar, Cicciolina and Lentil As Anything among your new local haunts, plus you have the waterfront, St.Kilda Botanical Gardens and Peanut Reserve nearby for some outdoor recreation and there are plenty of trams and buses nearby as well.

1-24belfordstreet-stkilda.com

2 1

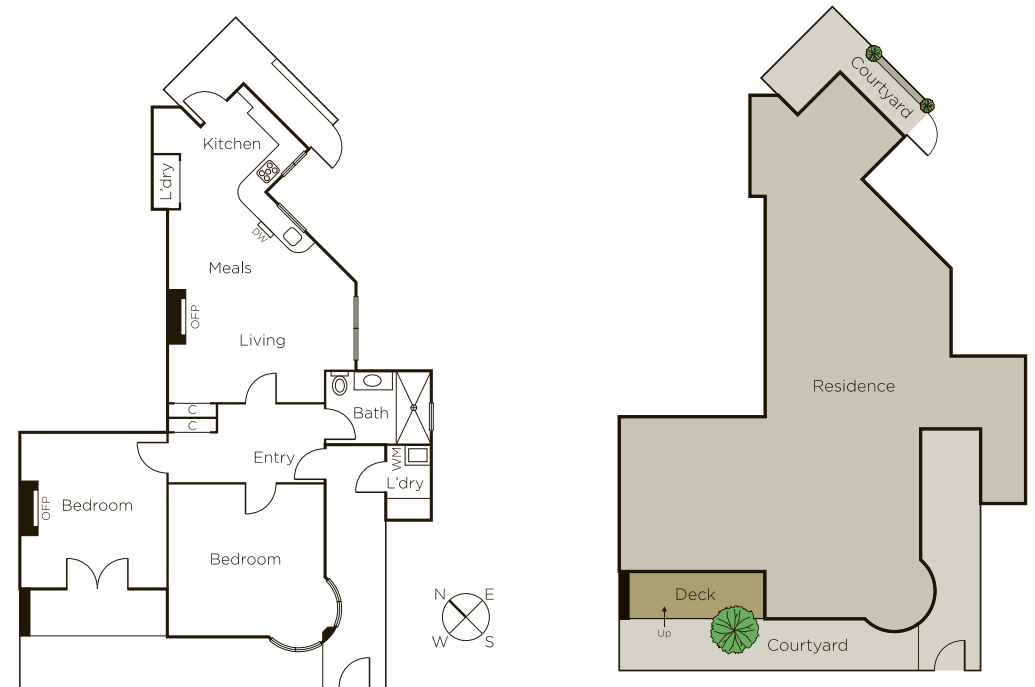
Auction Saturday 5th October at 2.30pm

Bradley Steinbach 0403 539 038

Matthew Grima 0403 438 601

101 Dundas Place Albert Park

9822 9999 mwone.com.au



MARSHALLWHITE
ONE

Disclaimer: Information provided is believed to be accurate as at the date of printing, no responsibility is taken for any errors or omissions. It is your responsibility to obtain independent, professional advice. Personal information collected from you is for security purposes to contact you should the property sell prior to auction. We may use this information to provide you with other real estate services including referrals to authorized financial services' providers. Visit our website at www.mwone.com.au for our privacy policy.