



MAX CLEARANCE 2.1 METERS


MARSHALLWHITE
ONE

1/22 Wattle Road
Hawthorn



Stylish Boutique Apartment in Lifestyle Location

This superb, conveniently located boutique apartment the front one of only two it is highlighted by a preferred northern orientation and its spacious, light-filled interior is enhanced by full-height windows and two private balconies. The sleek interior features wide timber floorboards, a generous living/dining area including a smart CaesarStone/ Miele appointed kitchen, 2-bedrooms with built in robes & two sparkling bathrooms. Features include a beautifully landscaped private, rear common area ideal for relaxed entertaining; plus video intercom, CCTV security, three split-system R/C air conditioners, lock-up storage cage & secure basement car space. Ideally situated within walking distance of Fairview Park, Yarra River walking & cycling tracks, Hawthorn station, trams, close to Glenferrie Road's shopping precinct, Swinburne University and easy CBD/ CityLink access - further reinforcing its inner city lifestyle appeal and investment potential.

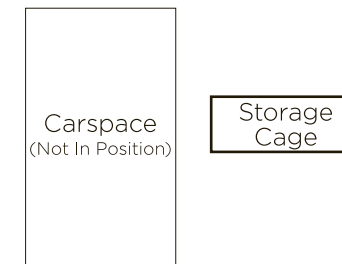
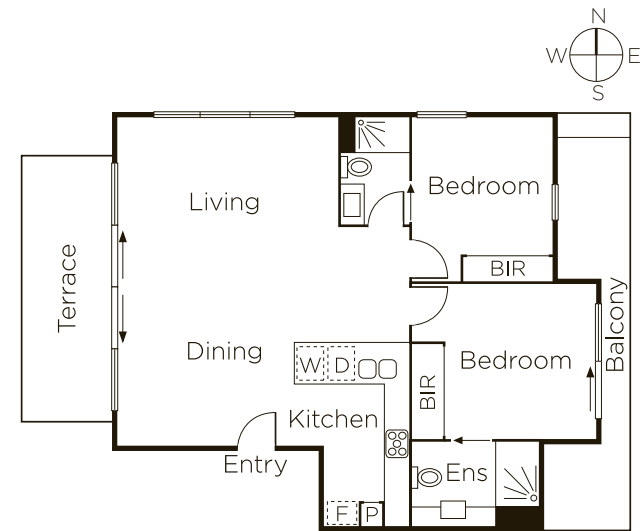
1-22wattleroad-hawthorn.com

2 2 1

Private Sale

Bethany Wilkinson 0449 285 813
Jack Moss 0439 378 954

801 Glenferrie Road Hawthorn
9822 9999 mwone.com.au



MARSHALLWHITE
ONE

Disclaimer: Information provided is believed to be accurate as at the date of printing, no responsibility is taken for any errors or omissions. It is your responsibility to obtain independent, professional advice. Personal information collected from you is for security purposes to contact you should the property sell prior to auction. We may use this information to provide you with other real estate services including referrals to authorized financial services' providers. Visit our website at www.mwone.com.au for our privacy policy.