




MARSHALLWHITE

121 Richardson Street
Albert Park





Irresistible Style, Idyllic Location

Displaying a seamless marriage of classic and contemporary architecture, the brilliant just completed transformation of this tuck-pointed Edwardian residence impressively showcases state of the art design, quality and luxury in a premier location close to the beach, Albert Park Village, schools and trams.

The elegance of Edwardian architecture is highlighted by the high ceilings and ornate detailing through two beautiful bedrooms featuring open fireplaces and built in robes. A stunning Limestone bathroom is appointed with the finest finishes. Pale Tasmanian oak floors and high ceilings accentuate the sense of light and space in the sensational open plan living and dining room boasting a sublime gourmet Limestone kitchen fully appointed with Miele appliances. Full height black steel framed doors open the living areas to a sunny courtyard and a fabulous private Black Butt decked north-facing garden with built in BBQ and concrete bench. A striking staircase leads up to the lavish main bedroom with a luxurious Limestone ensuite, built in robe and study/fourth bedroom.

3  2 

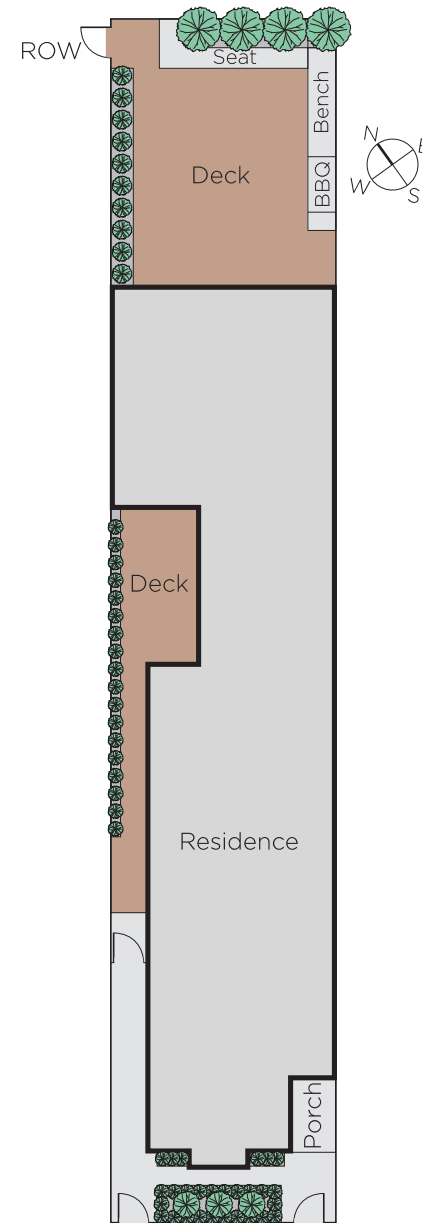
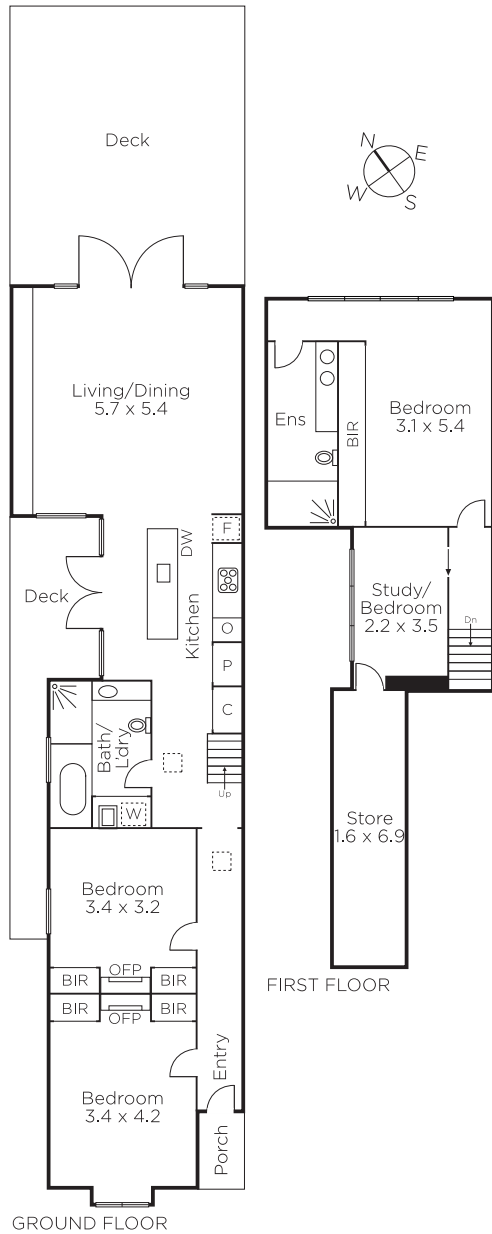
Auction Saturday 15th September at 12.30pm

Scott Belsey
0422 085 673

Oliver Bruce
0409 856 599


MARSHALLWHITE

101 Dundas Place, Albert Park



Disclaimer: Information provided is believed to be accurate as at the date of printing, no responsibility is taken for any errors or omissions. It is your responsibility to obtain independent, professional advice. Personal information collected from you is for security purposes and to contact you should the property sell prior to auction. We may use this information to provide you with other real estate services including referrals to authorised financial services' providers. Visit our website at www.marshallwhite.com.au for our privacy policy.