



MARSHALLWHITE
ONE

1/21 Auburn Grove
Hawthorn East



Beautifully Refurbished in this Premium Position

A quality, low maintenance and brand new refurbishment is complemented by a spacious interior to ensure that this bright, two bedroom apartment is a blue ribbon offering for first home buyers, urban lifestyle lovers and astute investors. Peacefully elevated on the ground-floor at the rear of this outstanding block, the home is central to Camberwell Junction, Auburn Village and Glenferrie Rd, as well as Swinburne University. Enhanced by stone benches and stainless steel appliances, the sleek open-plan kitchen / meals / living is generously proportioned and delightfully connected to a cute balcony. The bedrooms are particularly large with robes and there is a substantial bathroom, a European laundry, air conditioning and a convenient back-of-the-block carport easily accessible via a wide lane-way. In one of the area's most popular streets, you are literally surrounded by great cafes, shops, restaurants and public transport to take you anywhere.

1-21auburngrove-hawthorneast.com

2 1 1

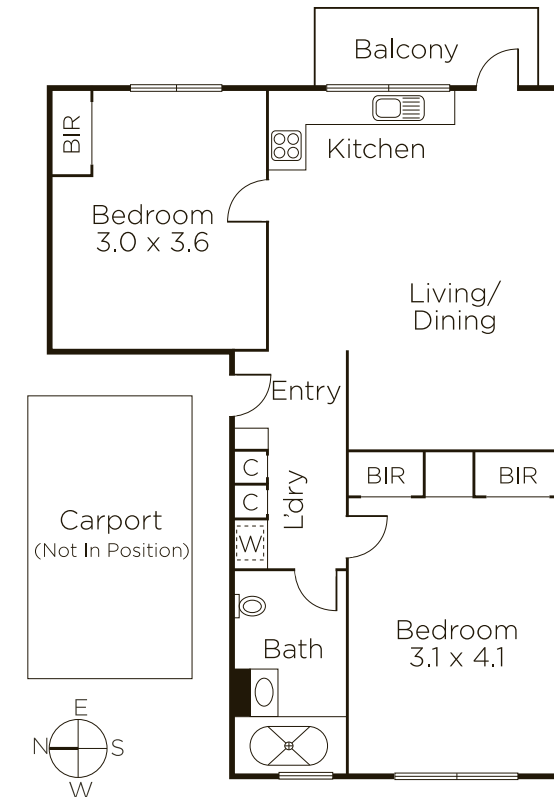
Auction Saturday 29th April at 10.30am

Jack Moss 0439 378 954

Bethany Wilkinson 0449 285 813

801 Glenferrie Road Hawthorn

9822 9999 mwone.com.au



MARSHALLWHITE
ONE

Disclaimer: Information provided is believed to be accurate as at the date of printing, no responsibility is taken for any errors or omissions. It is your responsibility to obtain independent, professional advice. Personal information collected from you is for security purposes to contact you should the property sell prior to auction. We may use this information to provide you with other real estate services including referrals to authorized financial services providers. Visit our website at www.mwone.com.au for our privacy policy.