



Stephen Gough 0439 844 855
stephen.gough@marshallwhite.com.au

Laurence Murphy 0421 829 028
laurence.murphy@marshallwhite.com.au

801 Glenferrie Road, Hawthorn 3122



12 Stodart Street,
Camberwell



Beautifully situated within a breathtaking 1755sqm approx. botanic garden and pool setting, Meningie, built in 1928 is a magnificent solid brick family residence that represents a truly rare opportunity to secure a family sanctuary to be enjoyed for generations to come.

A handsome façade is complemented by ornate ceilings, leadlight windows and timber floors, with a gracious sitting room, adjoining dining room and a library/study. There are a total of five bedrooms, four bathrooms a children's retreat and generous informal living rooms opening to the spectacular private gardens with heated pool, a rustic stone gazebo with open fireplace and a charming stone cottage suited to use as a gym, home office or guest accommodation.

Auction Saturday 28th October at 2.30pm
12stodartstreet-camberwell.com



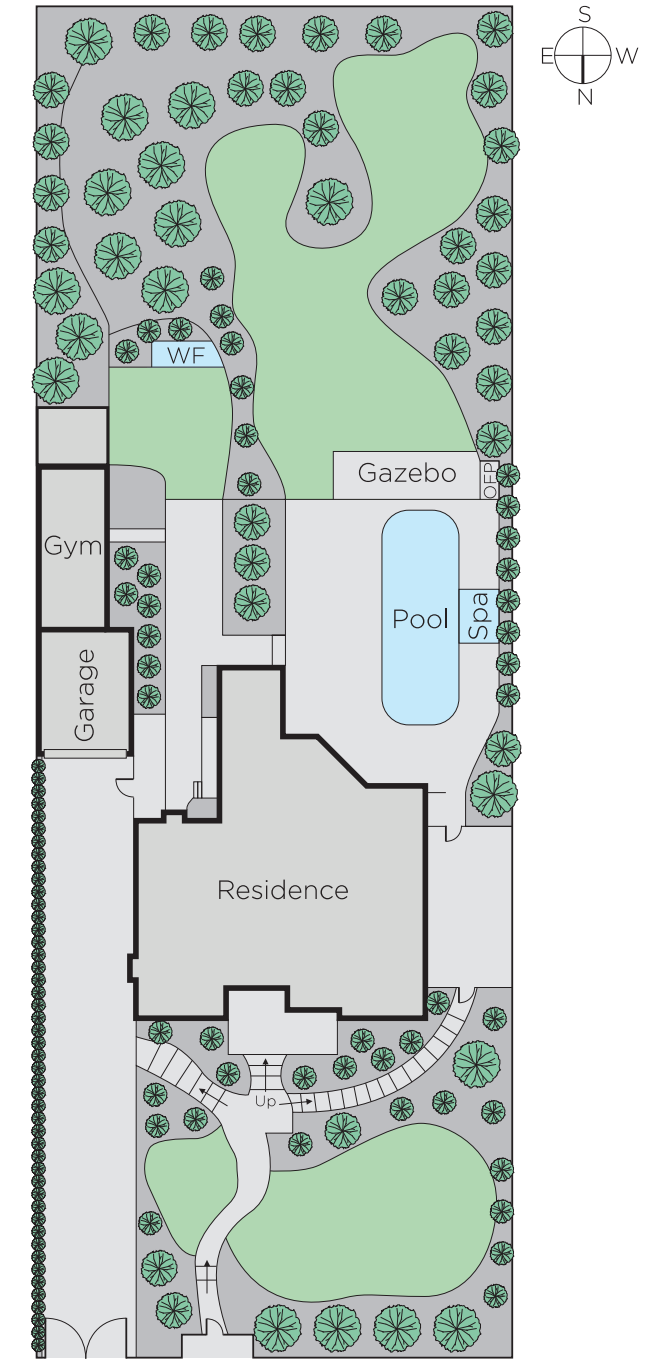
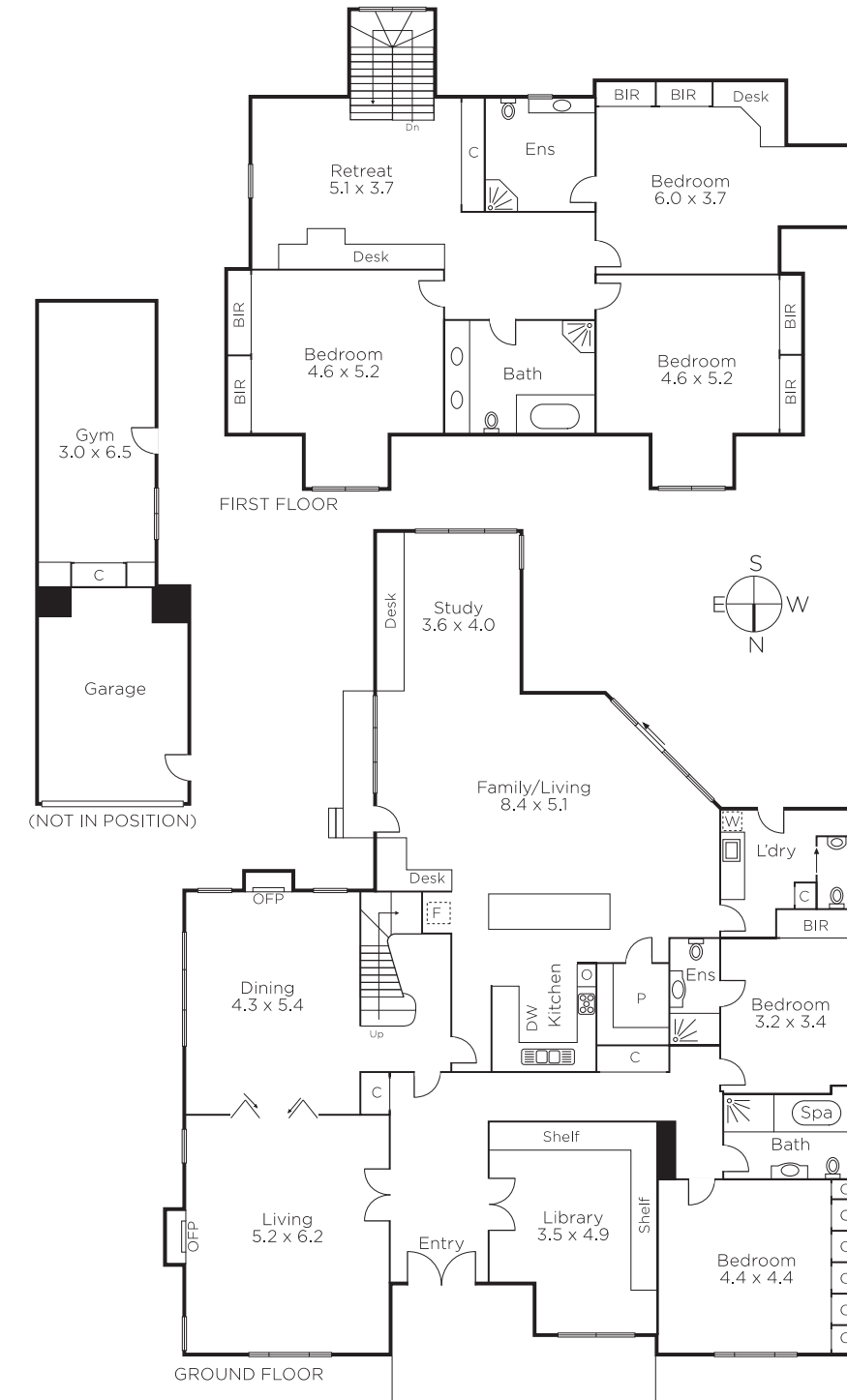


Superbly integrated family living spaces and outdoor entertaining.





Beautifully detailed formal living rooms.



Disclaimer: Information provided is believed to be accurate as at the date of printing, no responsibility is taken for any errors or omissions. It is your responsibility to obtain independent, professional advice. Personal information collected from you is for security purposes and to contact you should the property sell prior to auction. We may use this information to provide you with other real estate services including referrals to authorised financial services' providers. Visit our website at www.marshallwhite.com.au for our privacy policy.