



MARSHALLWHITE

12 Rockley Road
South Yarra

53.8m



18.2m



Fine Family Living in the Heart of South Yarra

A comfortable spacious family home set within a generous 985sqm (approx.) garden allotment in an elite tree-lined avenue. This distinguished solid brick Edwardian residence with period features represents an exceptional opportunity to renovate or alternatively to rebuild as a new family home. (STCA). Stunning high ceilings, period detail, decorative fretwork and Baltic pine floors define the reception hall, generous living and dining room and a welcoming sitting room with open fireplace. Beautiful proportions continue through three light-filled bedrooms and a 4th bedroom or study accompanied by two bathrooms and a laundry. The bright and spacious well-appointed kitchen and casual dining area opens to the deep private northeast garden with in-ground pool, in-ground trampoline and rear studio with bathroom. Providing ample parking for 4 cars, this beautiful property offers family lifestyle appeal, conveniently close to private schools and just a short stroll from the premier retail and café/ restaurant precincts on Toorak Rd and Chapel St, Como Cinemas and public transport.

12rockleyroad-southyarra.com

4  2  4 

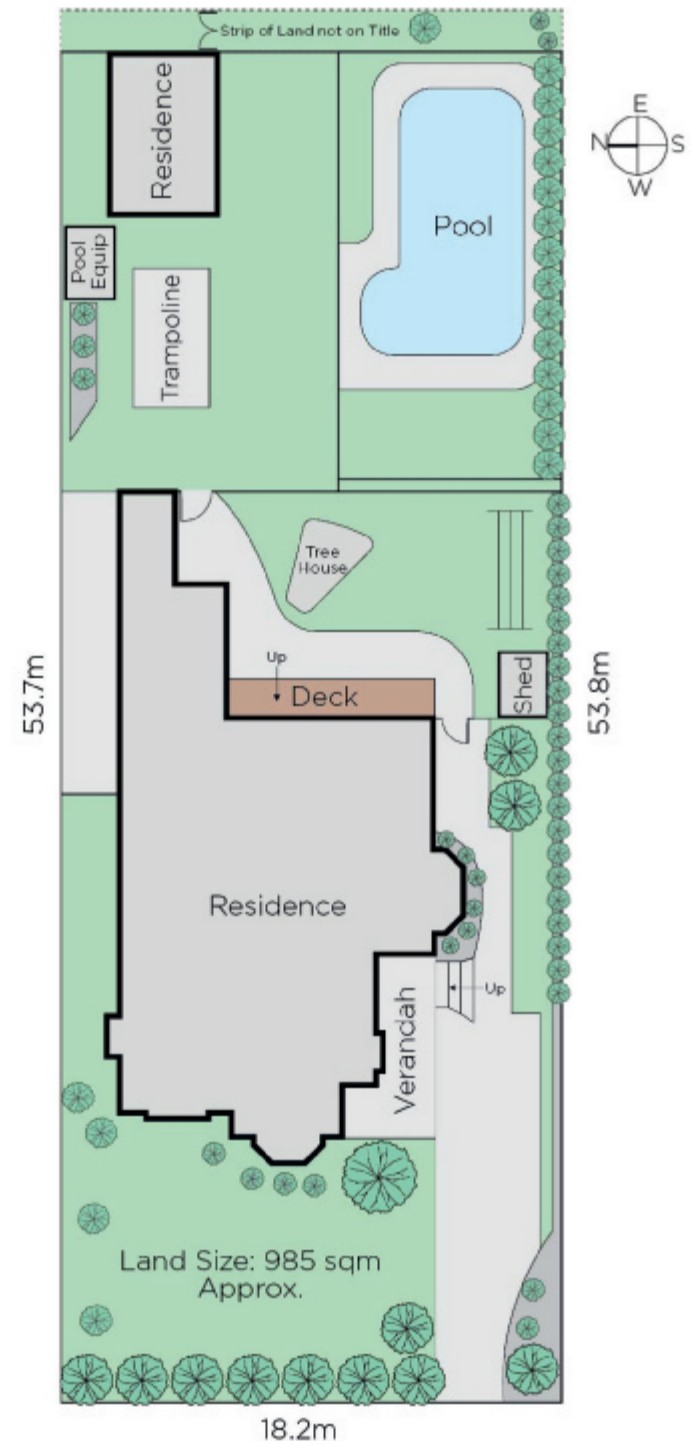
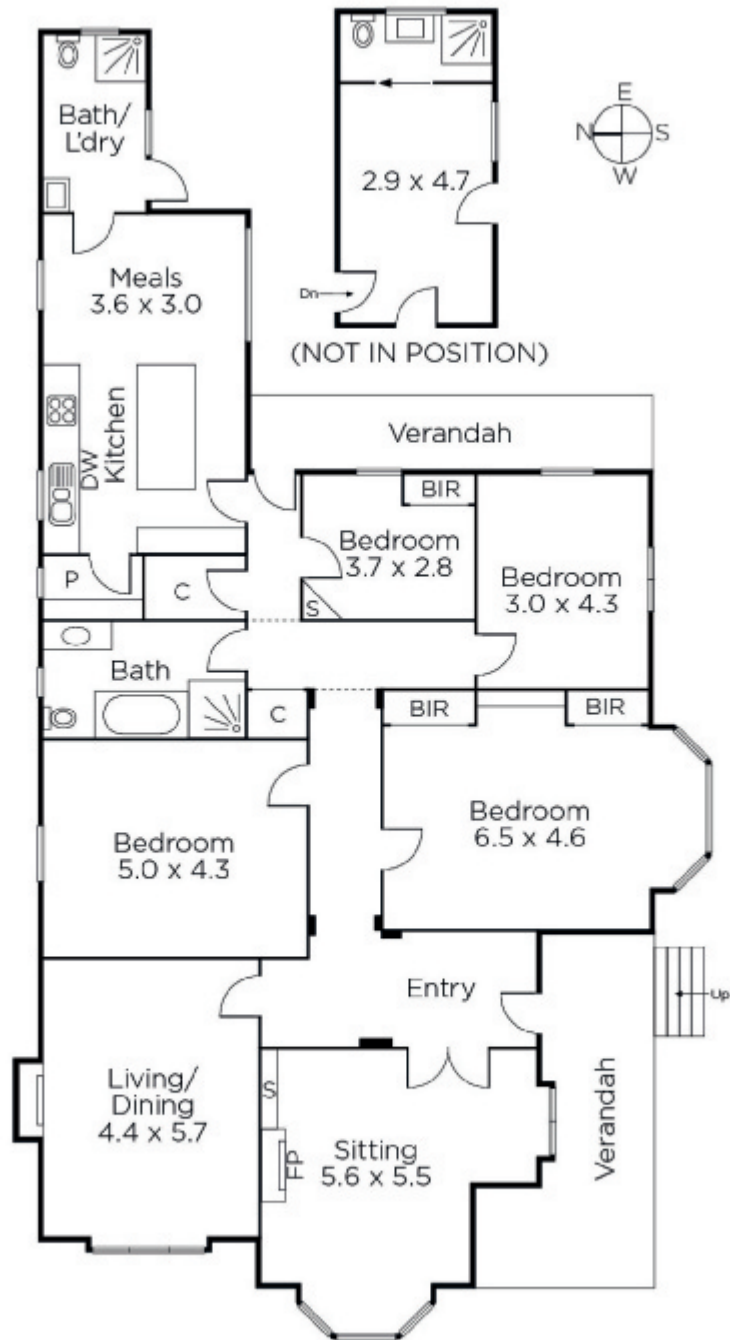
Auction Saturday 28th April at 11.30am

Justin Long
0418 537 973

Fiona Counsel
0409 516 916


MARSHALLWHITE

1111 High Street, Armadale



Disclaimer: Information provided is believed to be accurate as at the date of printing, no responsibility is taken for any errors or omissions. It is your responsibility to obtain independent, professional advice. Personal information collected from you is for security purposes and to contact you should the property sell prior to auction. We may use this information to provide you with other real estate services including referrals to authorised financial services' providers. Visit our website at www.marshallwhite.com.au for our privacy policy.