




MARSHALLWHITE

12 Hotham Street
East Melbourne



More than Meets the Eye

Defined by exceptional proportions and a flowing and flexible interior this impressive ground floor apartment delivers contemporary elegance whilst offering an easy low maintenance lifestyle in a fantastic East Melbourne location. The flowing interior features a tiled entrance foyer, 2-bedrooms, main+ensuite overlooking a central courtyard, a euro laundry & second bathroom. Through a study/living area to a generous open-plan living/dining room with polished concrete floors and a sleek S/S & Euro kitchen, opening to a sun drenched northern deck with steps to a basement retreat, games room/gym or home office.

12hothamstreet-eastmelbourne.com

2 2

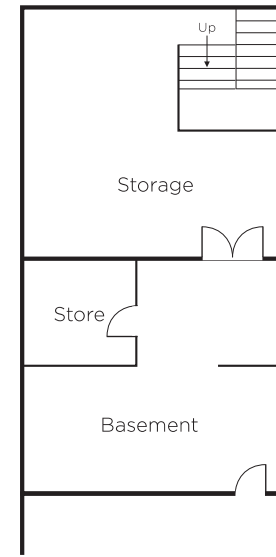
Auction Saturday 25th November at 10.30am

Andrew Gibbons 0407 577 007

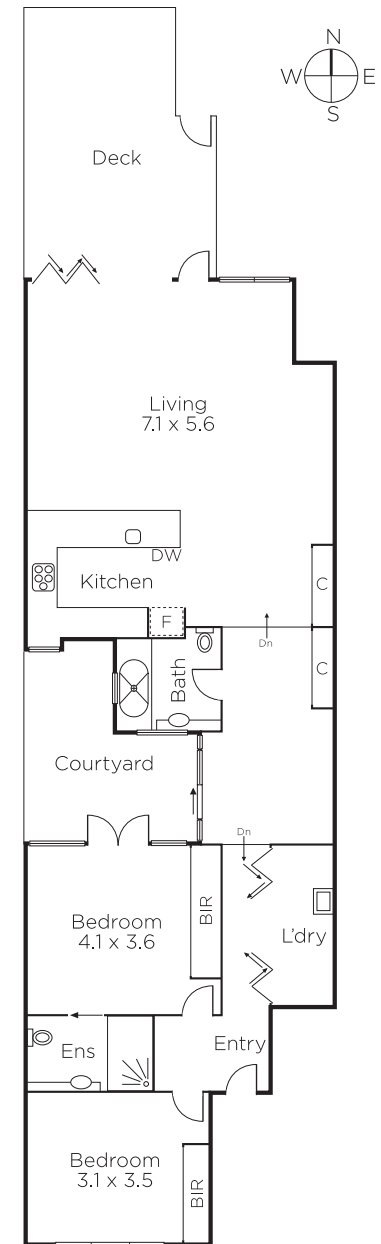
Kane Penhalluriack 0406 556 445

801 Glenferrie Road Hawthorn
marshallwhite.com.au


MARSHALLWHITE



BASEMENT



Disclaimer: Information provided is believed to be accurate as at the date of printing, no responsibility is taken for any errors or omissions. It is your responsibility to obtain independent, professional advice. Personal information collected from you is for security purposes and to contact you should the property sell prior to auction. We may use this information to provide you with other real estate services including referrals to authorised financial services' providers. Visit our website at www.marshallwhite.com.au for our privacy policy.