




MARSHALLWHITE
ONE

1/16 Dower Street
Camberwell



Single Level Living in Wattle Park Precinct

This appealing contemporary single level townhouse, one of only three in the Wattle Park precinct, boasts a well-maintained front garden & low-maintenance lifestyle.

Presented in excellent condition, the flexible, light-filled interior features polished timber floors plus a fresh white décor; with accommodation including an entrance hall opening to three bedrooms with BIRs (currently configured as two plus a second living room/study), bathroom, stylish open-plan CaesarStone kitchen with Euro appliances and informal living plus dining and laundry leading to a northern courtyard and sunny deck providing outdoor living options. Includes reverse cycle heating/cooling, solar panels and off-street parking.

1-16dowerstreet-camberwell.com



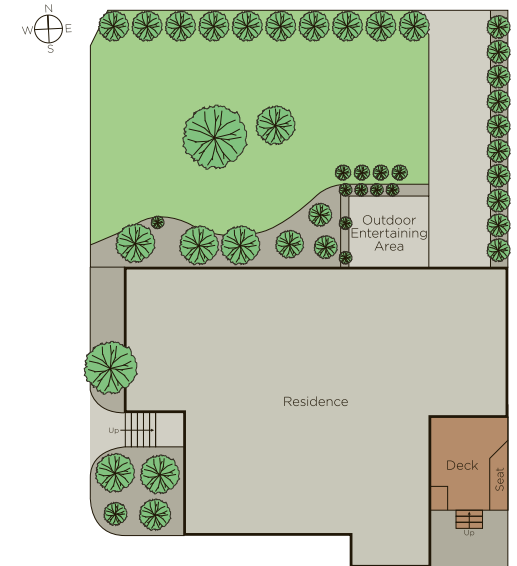
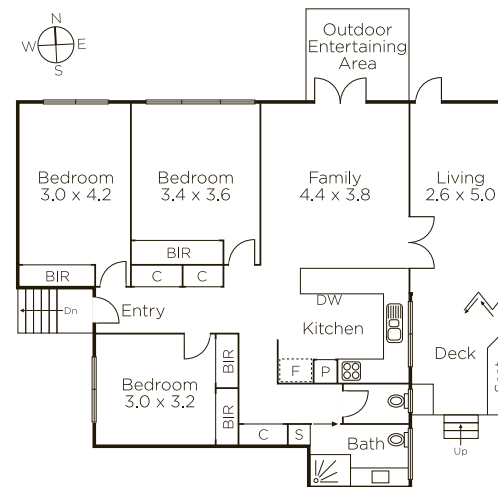
Auction Saturday 29th April at 12.30pm

Danny See 0402 533 853

Luke Saville 0437 720 806

801 Glenferrie Road Hawthorn

9822 9999 mwone.com.au



Disclaimer: Information provided is believed to be accurate as at the date of printing, no responsibility is taken for any errors or omissions. It is your responsibility to obtain independent, professional advice. Personal information collected from you is for security purposes to contact you should the property sell prior to auction. We may use this information to provide you with other real estate services including referrals to authorized financial services providers. Visit our website at www.mwone.com.au for our privacy policy.