




MARSHALLWHITE
ONE

11/50 Canterbury Road
Middle Park



Grand Lakeside Proportions

A refined space with magical dimensions, this 3 bedroom apartment is a beautifully presented and highly secure home in which you can live the life you love near Bridport St, Albert Park Village, Armstrong St, the waterfront, Albert Park Lake, Clarendon St and city-bound trams. Instantly engaging due to the grand scale of its living and dining area, the home also highlights a huge stone-topped kitchen with stainless steel appliances and a highly convenient breakfast bar, all of which beautifully balances open-plan living with a sense of kitchen zoning. The bathroom is pristine with independent bath and shower, plus a separate wc, while two of the bedrooms enjoy convenient built-in robes in this securely accessed home with intercom entry and the highly sought-after prize of rear parking. A brilliant lifestyle option with first class investment credentials.

11-50canterburyroad-middlepark.com 3 1 1

Auction Saturday 7th December at 10.30am

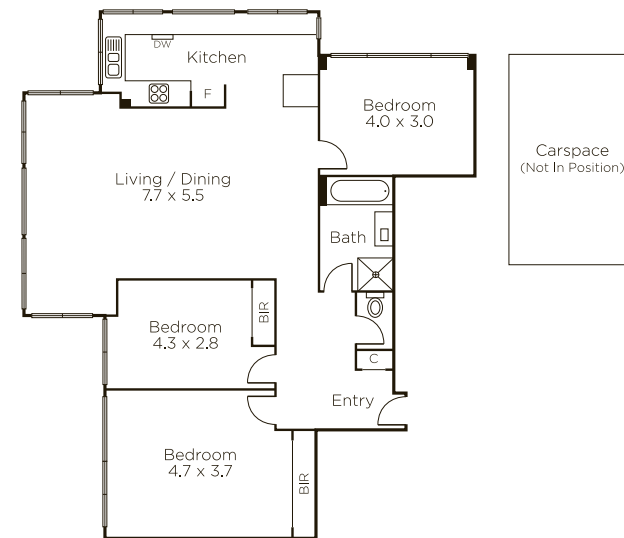
Matthew Grima 0403 438 601

Bradley Steinbach 0403 539 038

Kaine Lanyon 0411 875 478

101 Dundas Place Albert Park

9822 9999 mwone.com.au



MARSHALLWHITE ONE

Disclaimer: Information provided is believed to be accurate as at the date of printing, no responsibility is taken for any errors or omissions. It is your responsibility to obtain independent, professional advice. Personal information collected from you is for security purposes to contact you should the property sell prior to auction. We may use this information to provide you with other real estate services including referrals to authorized financial services providers. Visit our website at www.mwone.com.au for our privacy policy.