



  
MARSHALLWHITE  
ONE

1/15 Liardet Street  
Port Melbourne





## ‘The Park Apartments’: Bayside Excellence

This alluring and light-filled, two bedroom apartment is an outstanding entry to the highly coveted ‘The Park Apartments’ with a terrific suite of communal facilities, in a wonderful position near both the waterfront and Bay St. Overlooking an attractive paved courtyard, the open-plan living is filled with natural light, whilst SMEG kitchen appliances and stone benchtops reflect a commitment to quality that reflects not only this apartment but also the entire complex which features a communal swimming pool, gymnasium and exquisite gardens. Secure with video entry and basement parking, the home also features a vogue bathroom, microfiber blinds, central heating and cooling as well as robes in each bedroom and a storage cage. This sought-after Port Melbourne address is renowned for waterfront proximity and just moments from Bay St’s lifestyle hub rich in cafes, restaurants, bars and exclusive strip shopping.

1-15liardetstreet-portmelbourne.com

2 1 1

Auction Saturday 17th March at 2.30pm

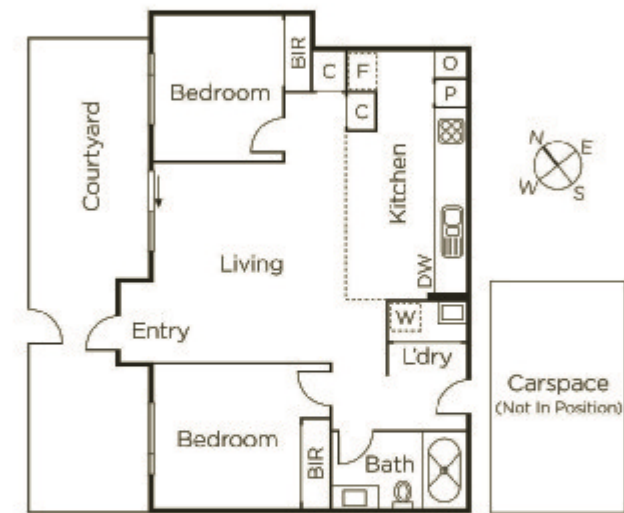
Bradley Steinbach 0403 539 038

Jaymee Ntentis 0478 724 222

Brendan Allen 0499 229 007

101 Dundas Place Albert Park

9822 9999 mwone.com.au



MARSHALLWHITE  
ONE

Disclaimer: Information provided is believed to be accurate as at the date of printing, no responsibility is taken for any errors or omissions. It is your responsibility to obtain independent, professional advice. Personal information collected from you is for security purposes to contact you should the property sell prior to auction. We may use this information to provide you with other real estate services including referrals to authorized financial services providers. Visit our website at [www.mwone.com.au](http://www.mwone.com.au) for our privacy policy.