



MARSHALLWHITE

1/145 Prospect Hill Road
Canterbury



"Rochester" - Elegance in a Pretty Garden Setting

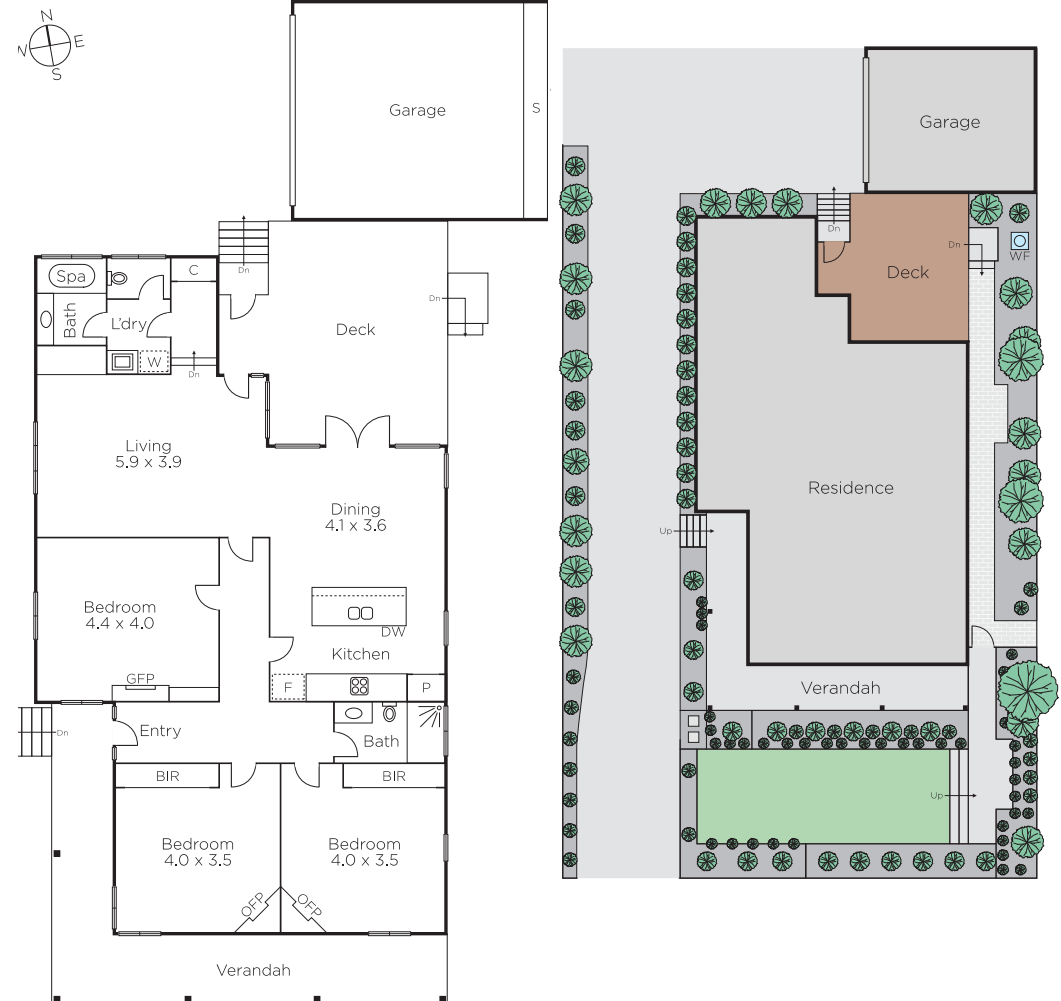
This elegant and immaculately maintained Edwardian home, the original one of two, enjoys a street frontage and pretty garden setting. A beautifully presented interior features arched hallway, 3 bedrooms, pristine bathroom plus a rear bathroom with concealed laundry. A generous living room plus dining area and superb granite/Euro appointed kitchen overlooks a sun drenched north-facing deck providing a perfect environment for indoor or outdoor entertaining and relaxation with family and friends. Includes period features, OFPs, high ceilings, d/heating, R/C air-conditioner (living area), alarm system & rem/double garage.

3 2 2

Auction Saturday 24th November at 11.30am

Nick Ptak
0413 370 442

Nicholas Franzmann
0412 247 175



MARSHALLWHITE

801 Glenferrie Road, Hawthorn

Disclaimer: Information provided is believed to be accurate as at the date of printing, no responsibility is taken for any errors or omissions. It is your responsibility to obtain independent, professional advice. Personal information collected from you is for security purposes and to contact you should the property sell prior to auction. We may use this information to provide you with other real estate services including referrals to authorised financial services providers. Visit our website at www.marshallwhite.com.au for our privacy policy.