



MARSHALLWHITE  
ONE

114/308 Carlisle Street  
St Kilda East





## Architectural Excellence with a Birds' Eye View of Carlisle Street

Designed by Paul Conrad of Conrad Architects to combine wonderful Carlisle St people-watching with an extended balcony and the finest double-glazed windows, allowing you to retreat privately as you choose. A birds' eye view of Carlisle adds to the allure of bold designer living that includes porcelain waterfall kitchen benches, Miele appliances, soft close cabinetry and an integrated Ilve refrigerator. With mirrored robes in each bedroom, an alcove study nook in the main bedroom and a fully-tiled bathroom / laundry, this striking home also features secure video entry and basement parking. Whether it be a coffee at Las Chicas, a wine at the Carlisle St Wine Bar, a cocktail at Illona Staller or some quality Vietnamese at Uncle, it is all at your doorstep in this amazing location which is also just metres from easy city access via Balaclava Railway Station or the number 67 tram.

114-308carlislestreet-stkildaeast.com

2 1 1

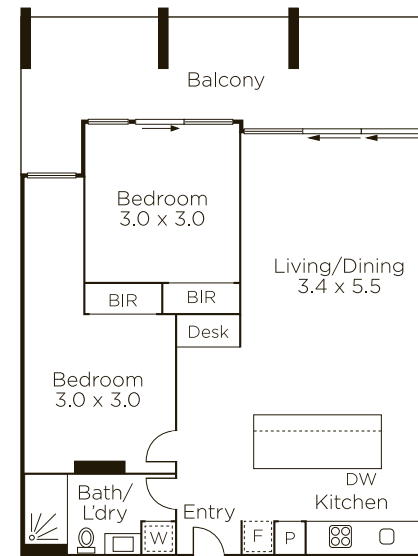
Auction Saturday 8th December at 2.30pm

Jack Nicol 0400 774 428

1111 High Street Armadale

Simon Monnier-Penny 0404 283 551

9822 9999 mwone.com.au



LEVEL 1



BASEMENT



MARSHALLWHITE  
ONE

Disclaimer: Information provided is believed to be accurate as at the date of printing, no responsibility is taken for any errors or omissions. It is your responsibility to obtain independent, professional advice. Personal information collected from you is for security purposes to contact you should the property sell prior to auction. We may use this information to provide you with other real estate services including referrals to authorized financial services' providers. Visit our website at [www.mwone.com.au](http://www.mwone.com.au) for our privacy policy.