




MARSHALLWHITE

114 Clyde Street
Box Hill North



Exciting Possibilities

Built in 1947, this post War brick home, situated on a superb north facing deep garden allotment, offers immediate comfort and exciting potential to modernise, extend or rebuild (STCA).

Features include three generous bedrooms, formal lounge, separate dining room, a neat kitchen with a bank of cupboards, including an in built "cooling cupboard", 50's retro dining booth, workshop garage and carport.

This home presents an outstanding opportunity to reside in this popular neighbourhood just minutes away from the hub and amenity of Box Hill Central. Land Size: 766sqm approx.

114clydestreet-boxhill.com



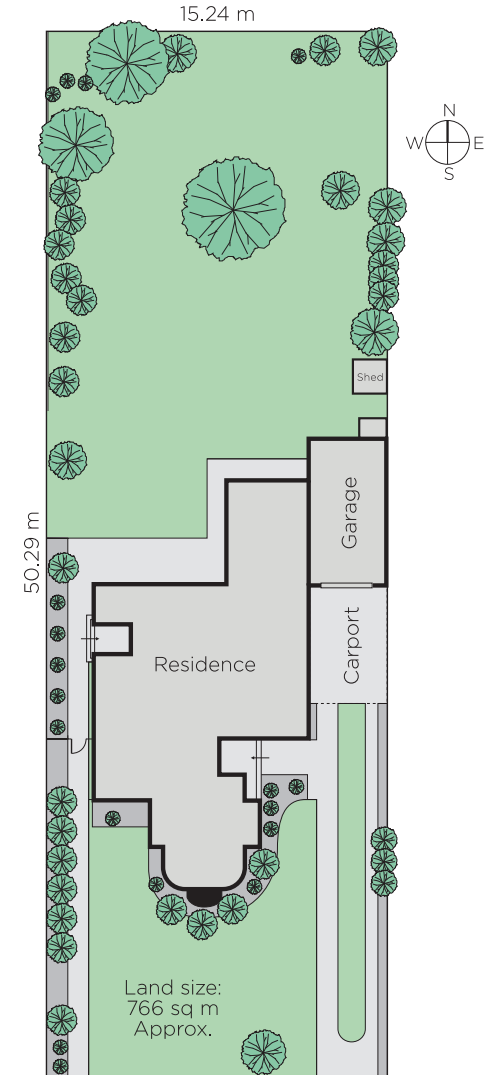
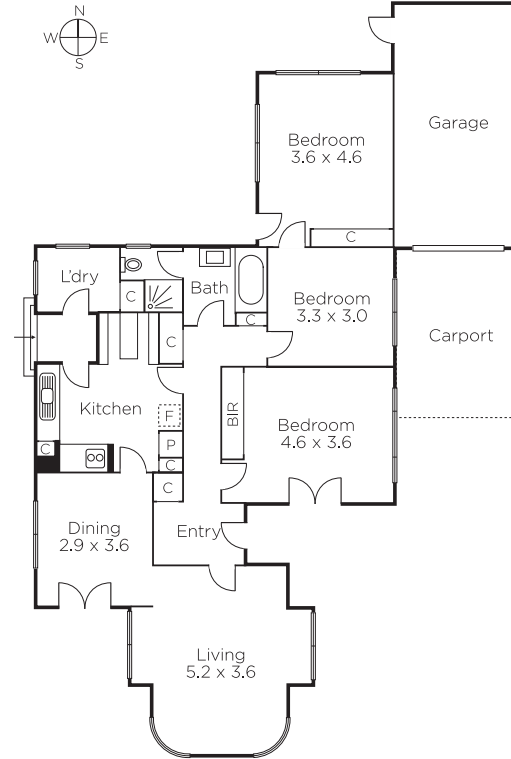
Auction Saturday 6th May at 12.30pm

Michael Wood 0425 280 191

Rae Tomlinson 0418 336 234

Tori McGregor 0400 633 992

801 Glenferrie Road Hawthorn
marshallwhite.com.au



Disclaimer: Information provided is believed to be accurate as at the date of printing, no responsibility is taken for any errors or omissions. It is your responsibility to obtain independent, professional advice. Personal information collected from you is for security purposes and to contact you should the property sell prior to auction. We may use this information to provide you with other real estate services including referrals to authorised financial services' providers. Visit our website at www.marshallwhite.com.au for our privacy policy.