



MARSHALLWHITE  
ONE

11/39-41 Kensington Road  
South Yarra





## Exquisite Grandeur, Exclusively Positioned

This superbly renovated and wonderfully character-filled, two bedroom apartment is part of the tightly-held, 1940 constructed, Castle Hill building, crafted by Arthur Plaisted in the style of the Georgian era. The apartment's towering ceilings and polished timber floors create an immediate visual impact, whilst a SMEG-equipped kitchen with stone benches is removed from the generous dining room and semi-attached lounge, where an attractive balcony oversees the gardens. The bedrooms are genuinely large with substantial built-in robes, whilst the renovated bathroom / laundry is a pristine example of timeless designer flair in this home with hydronic heating, reverse cycle air conditioning and undercover parking. Merely moments from both Chapel St and Toorak Village, the local cafes, restaurants, bars and shopping are unsurpassed, whilst the Como Centre, cinemas, trams and trains are all nearby as well.

11-39kensingtonroad-southyarra.com 2 1 1

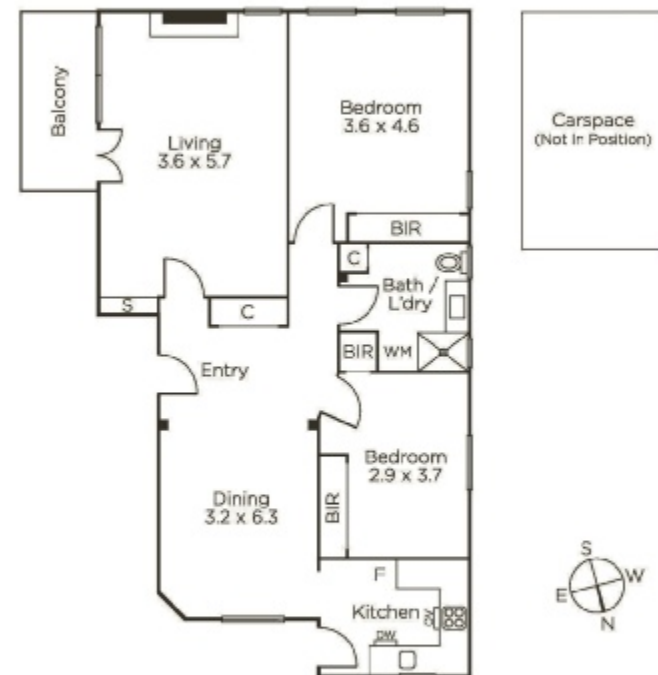
Auction Saturday 10th August at 3.30pm

Joseph Ben-Danan 0408 135 948

Jack Nicol 0400 774 428

1111 High Street Armadale

9822 9999 mwone.com.au



MARSHALLWHITE  
ONE

Disclaimer: Information provided is believed to be accurate as at the date of printing, no responsibility is taken for any errors or omissions. It is your responsibility to obtain independent, professional advice. Personal information collected from you is for security purposes to contact you should the property sell prior to auction. We may use this information to provide you with other real estate services including referrals to authorized financial services providers. Visit our website at [www.mwone.com.au](http://www.mwone.com.au) for our privacy policy.