




MARSHALLWHITE

1/12 Oswin Street
Kew East



Superb Single Level Living

Set within leafy gardens and 1 of only 2, this meticulously maintained single level residence's north-oriented and well-proportioned dimensions provide a sensational low maintenance lifestyle close to Harp Village, Hays Paddock, High St trams, schools and freeway access.

Year round natural light streams through the superb kitchen, inviting dining room and generous living room opening to the northwest garden. The main bedroom with built in robe and en-suite overlooks the garden while two additional bedrooms with built in robe share a pristine bathroom.

Includes laundry, versatile internally accessed garage and carport.

1-12oswinstreet-keweast.com

3 2 2

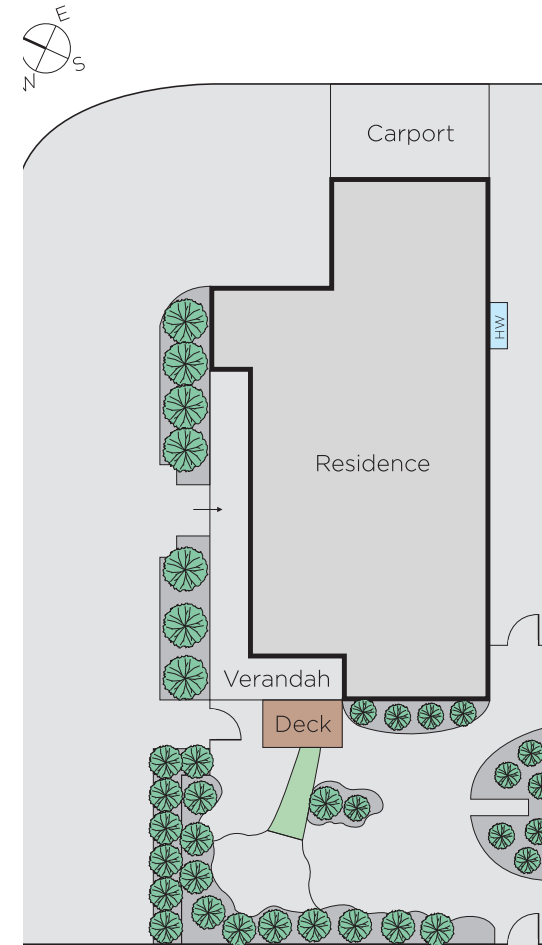
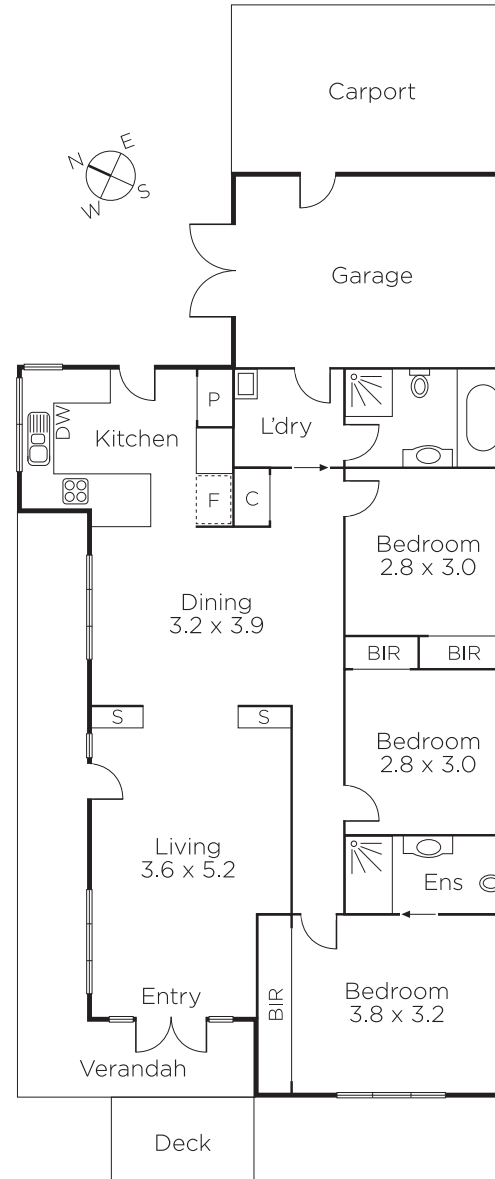
Auction Saturday 19th August at 9.30am

Mark Sproule 0408 090 205

Nicholas Franzmann 0412 247 175

801 Glenferrie Road Hawthorn
marshallwhite.com.au


MARSHALLWHITE



Disclaimer: Information provided is believed to be accurate as at the date of printing, no responsibility is taken for any errors or omissions. It is your responsibility to obtain independent, professional advice. Personal information collected from you is for security purposes and to contact you should the property sell prior to auction. We may use this information to provide you with other real estate services including referrals to authorised financial services' providers. Visit our website at www.marshallwhite.com.au for our privacy policy.