




MARSHALLWHITE
ONE

1/1091 Burke Road
Hawthorn East



Impressive Al fresco Dimensions

This exceptionally large, bright and airy, two bedroom, older-style, apartment blends traditional character with modern clean lines and has been opened-up for an enlightened and al fresco style of living. A superbly presented ground-floor apartment that is perfectly geared for entertaining, the home is a first class lifestyle or investment option, just around the corner from Camberwell Junction and 'The Well' Shopping Centre. Flowing to its huge paved courtyard, the home's vast open-plan kitchen / meals / living presents a particularly impressive indoor-outdoor living and entertaining zone that is quite extraordinary for an apartment. Highly secure with intercom entry and secure parking, the home also features robes in each bedroom, plus a smart bathroom / laundry and beautiful polished timber floors. Immerse yourself in the outstanding local shopping, café culture, restaurants and nightlife all with plenty of city-bound public transport nearby as well.

1-1091burkeroad-hawthorneast.com

2 1 1

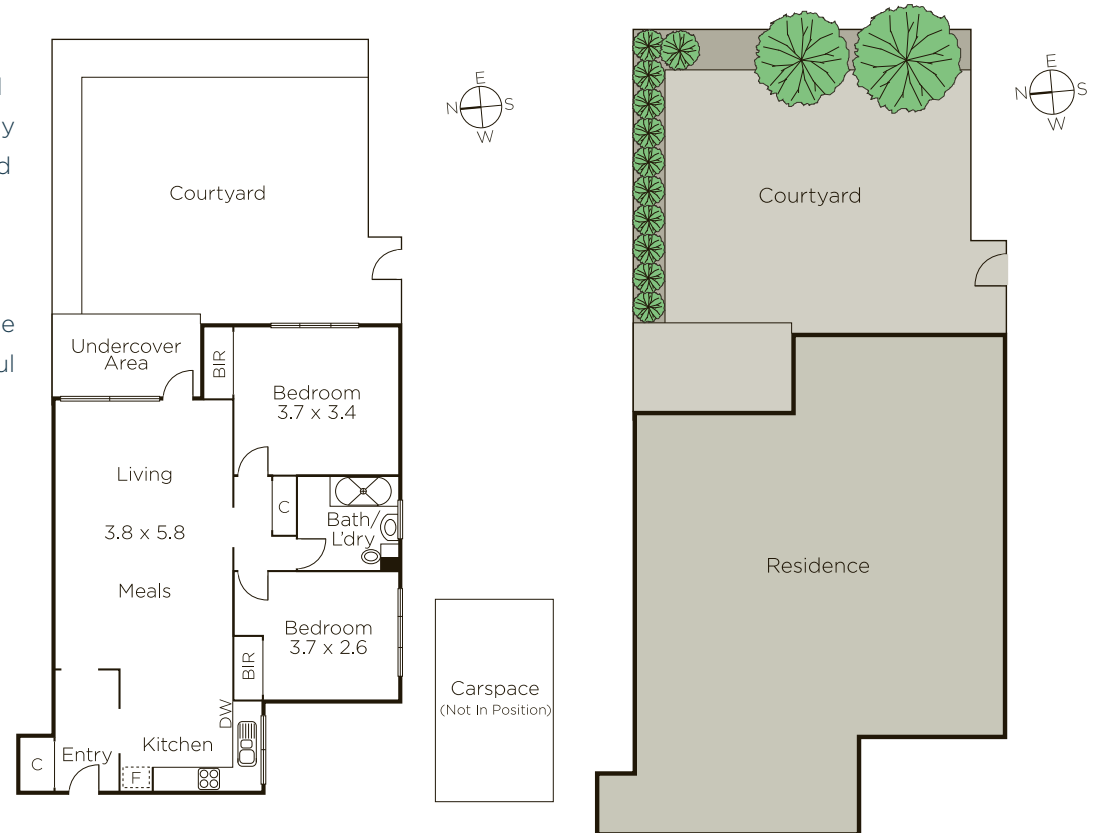
Auction Saturday 8th July at 9.30am

Evelyne Ioannou 0425 700 938

Jack Moss 0439 378 954

801 Glenferrie Road Hawthorn

9822 9999 mwone.com.au



MARSHALLWHITE
ONE

Disclaimer: Information provided is believed to be accurate as at the date of printing, no responsibility is taken for any errors or omissions. It is your responsibility to obtain independent, professional advice. Personal information collected from you is for security purposes to contact you should the property sell prior to auction. We may use this information to provide you with other real estate services including referrals to authorized financial services providers. Visit our website at www.mwone.com.au for our privacy policy.