



CUMULUS
6 LISSON GROVE


MARSHALLWHITE
ONE

110/6 Lisson Grove
Hawthorn



‘Cumulus’: Designer Style, Generously Proportioned

This flawlessly presented, as new, one bedroom apartment is a particularly spacious, al fresco entertainers’ delight in the architecturally bold and broadly celebrated “Cumulus” building. Superbly equipped with Miele kitchen appliances, stone bench tops and beautiful mirrored splash backs, the open-plan living flows seamlessly to a courtyard that is perfect for entertaining while introducing a remarkable sense of spaciousness to everyday life. Wonderfully secure with two video entries, basement parking and a storage cage, the home also features attractive parquetry floors, mirrored robes in the bedroom and reverse cycle A/C. This highly coveted location in one of Hawthorn’s most desirable streets allows you to easily access shops, cafes, bars and restaurants on Glenferrie Rd and Swan St as well as Bridge Rd, plus access to all modes of transport and the Yarra River.

110-6lissongrove-hawthorn.com

1 1 1

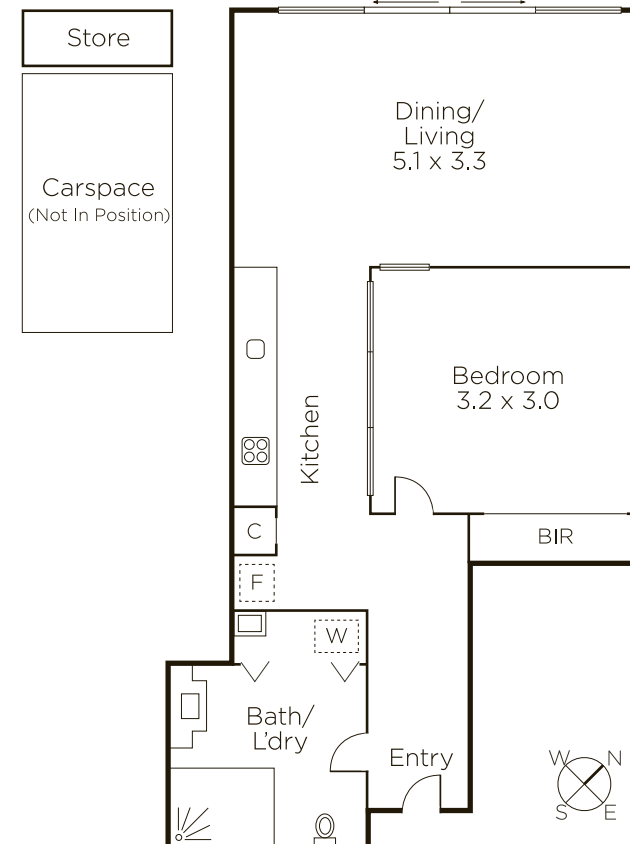
Auction Saturday 11th November at 2.30pm

Bethany Wilkinson 0449 285 813

Jack Moss 0439 378 954

801 Glenferrie Road Hawthorn

9822 9999 mwone.com.au



MARSHALLWHITE
ONE

Disclaimer: Information provided is believed to be accurate as at the date of printing, no responsibility is taken for any errors or omissions. It is your responsibility to obtain independent, professional advice. Personal information collected from you is for security purposes to contact you should the property sell prior to auction. We may use this information to provide you with other real estate services including referrals to authorized financial services’ providers. Visit our website at www.mwone.com.au for our privacy policy.