



MARSHALLWHITE

110 Thomas Street  
Hampton



## Easy Living in the Heart of Hampton

Single-level spaciousness in a fantastic location offers relaxed style and potential STCA near Hampton St. This 655 sqm approx home is four doors from Thomas St's café, metres from one of Bayside's best parks, and a short walk to Hampton St's shops and station. Easy-care features are on show in three living and dining rooms, four bedrooms and two bathrooms. Quality upgrades include a kitchen with stone benches and a drawer dishwasher, main bedroom with two-way ensuite, attic storage, and timber floors. Look forward to summers on the screened deck, play space in the established garden, and a central location.

110thomasstreet-hampton.com

4 2 2

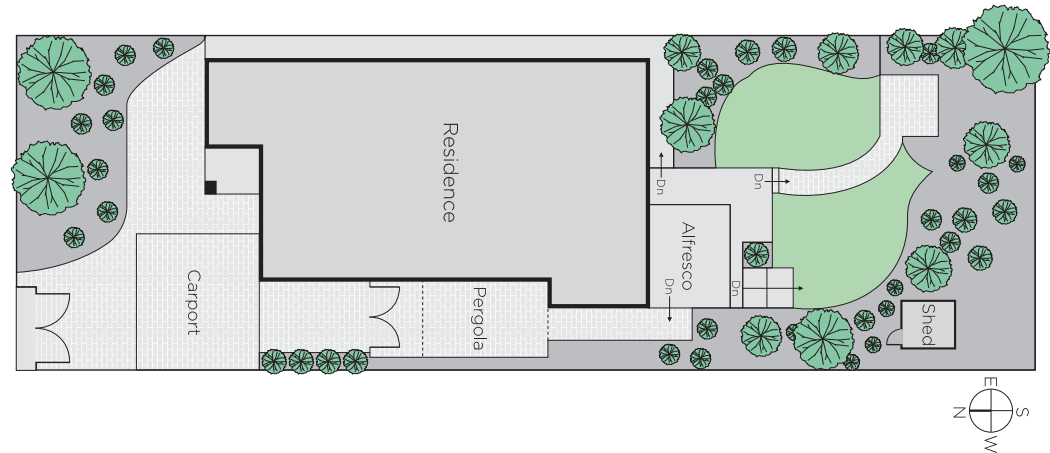
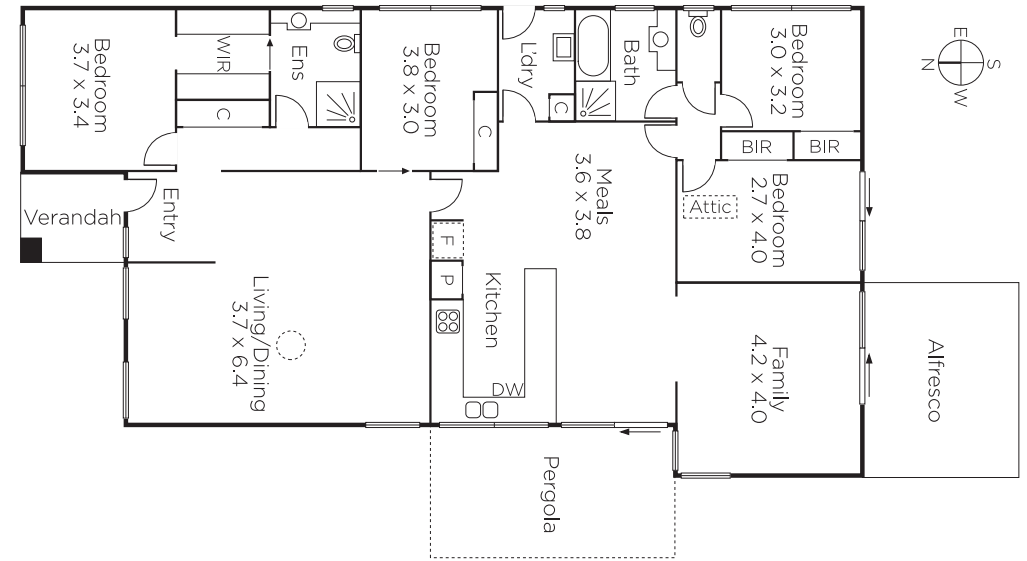
Private Sale

Robin Parker 0409 336 282

Kate Fowler 0418 418 385

225 Bay Street Brighton  
marshallwhite.com.au

  
MARSHALLWHITE



Disclaimer: Information provided is believed to be accurate as at the date of printing, no responsibility is taken for any errors or omissions. It is your responsibility to obtain independent, professional advice. Personal information collected from you is for security purposes and to contact you should the property sell prior to auction. We may use this information to provide you with other real estate services including referrals to authorised financial services' providers. Visit our website at [www.marshallwhite.com.au](http://www.marshallwhite.com.au) for our privacy policy.