




MARSHALLWHITE
ONE

1/10 Coppin Street
Malvern East



Blue Ribbon, Older-Style Chic

Defined by its eye-catching, older-style, dimensions and, more specifically, by its huge, north-facing lounge / dining room, this captivating, two bedroom, mid 20th Century apartment is a rare treat in one of Malvern East's most sought-after tree-lined streets. Updated with stone bench tops, gleaming white cabinetry and polished timber floors, the kitchen / meals is semi-attached to a large and light-filled lounge / dining room. Also generously sized, the bedrooms are each equipped with built-in robes, whilst the bathroom / laundry is separate to wc and features an independent bath and shower. Accessed securely by intercom entry, the home also offers the prize of parking on title. This broad, leafy boulevard is just a leisurely stroll from the beauty of Central Park, outstanding local cafés and city-bound trams, as well as Malvern Central Shopping Centre, Glenferrie Rd and Malvern Railway Station for effortless city commuting.

1-10coppinstreet-malverneast.com

2 1 1

Auction Saturday 6th July at 12.30pm

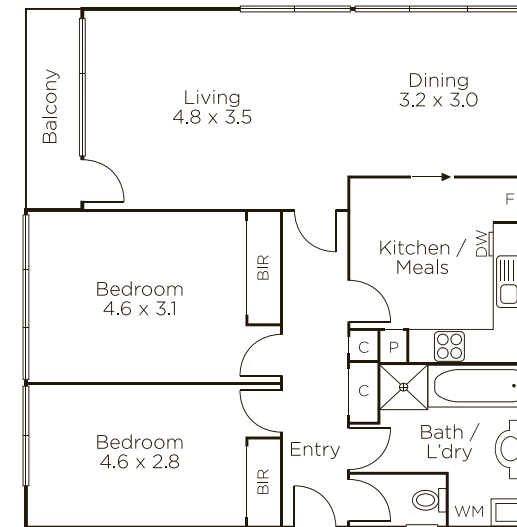
Tom Hayne 0429 149 070

Daniel Wheeler 0411 676 058

Joseph Ben-Danan 0408 135 948

1111 High Street Armadale

9822 9999 mwone.com.au



MARSHALLWHITE
ONE

Disclaimer: Information provided is believed to be accurate as at the date of printing, no responsibility is taken for any errors or omissions. It is your responsibility to obtain independent, professional advice. Personal information collected from you is for security purposes to contact you should the property sell prior to auction. We may use this information to provide you with other real estate services including referrals to authorized financial services providers. Visit our website at www.mwone.com.au for our privacy policy.