




MARSHALLWHITE

11 Stuart Avenue
Cheltenham



Big Potential on 687 sqm

North-facing land of 687 square metres approx opens up your options to renovate or rebuild STCA in a prized street. The central location makes this ideal for easy family living, with the new Southland station nearby, golf courses and parkland provide hectares of greenery around the corner, and shops, gyms and cafes are a short walk away. High-set three-bedroom timber home has been here since the 1950s, and it's in great shape to rent out, update or extend into the wide-open rear garden. Bring a new vision to this low-traffic street, popular with families wanting a central address near schools and shopping.

11stuartavenue-cheltenham.com

3 1 2

Auction Saturday 3rd March at 10am

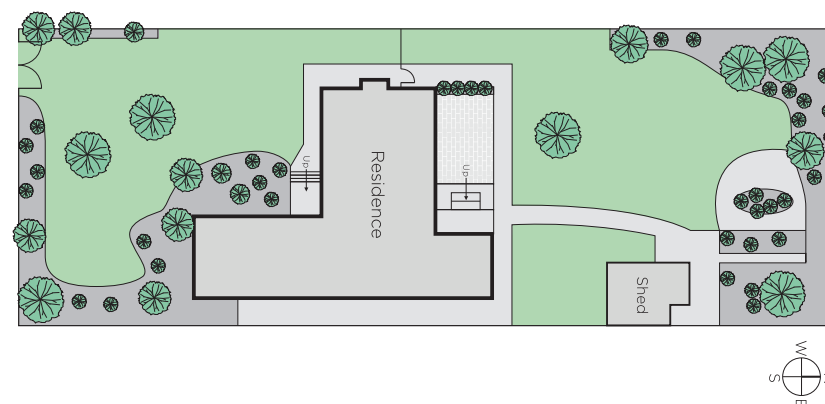
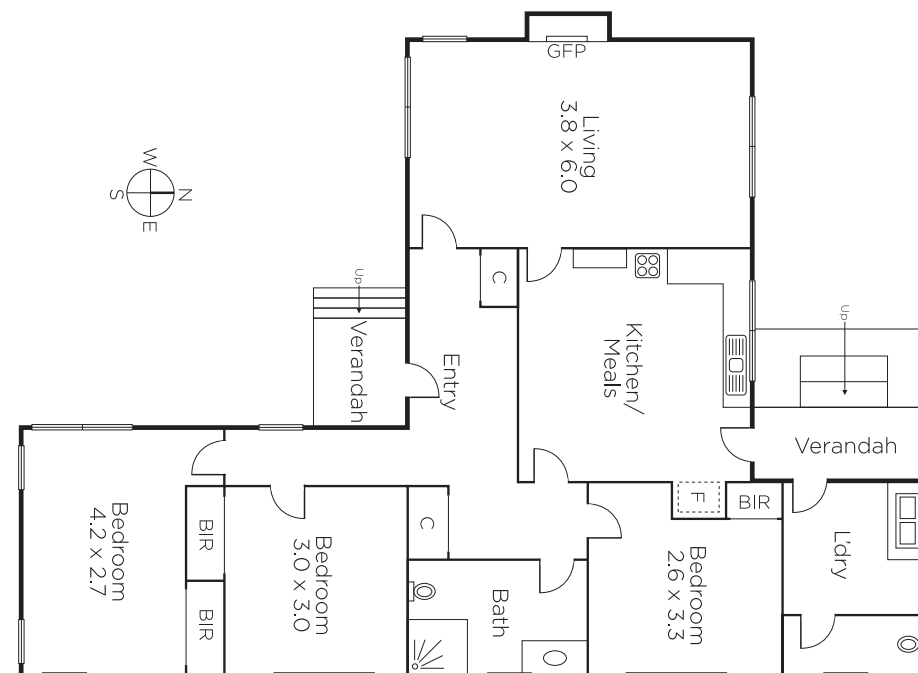
Matthew Pillios
0408 145 982

Dahli Woosnam
0435 505 309

Kate Strickland
0400 125 946


MARSHALLWHITE

225 Bay Street, Brighton



Disclaimer: Information provided is believed to be accurate as at the date of printing, no responsibility is taken for any errors or omissions. It is your responsibility to obtain independent, professional advice. Personal information collected from you is for security purposes and to contact you should the property sell prior to auction. We may use this information to provide you with other real estate services including referrals to authorised financial services providers. Visit our website at www.marshallwhite.com.au for our privacy policy.