



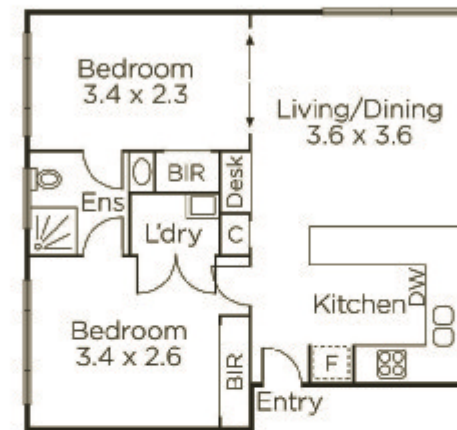

MARSHALLWHITE
ONE

1/1 Rockley Road
South Yarra



Blue Chip South Yarra Beauty

In one of South Yarra's broadest and most popular tree-lined streets, this attractive, two bedroom, ground-floor apartment is a beautifully presented home that allows you to wander the shops, cafes, bars and restaurants of Toorak Rd and Chapel St, catch a movie at Como or the Jam Factory, revel in the local nightlife or take a Number 8 tram in to the city. Geared for a superior lifestyle or investment return and immaculate with polished timber floors and timber venetian blinds, the apartment features a flexible floorplan that currently comprises a kitchen/meals/living with a built-in study nook and attractive outlooks as well as bedrooms that each enjoy ensuite access to the vogue designer bathroom. Secure intercom entry and parking are important additions in this vibrant location that really doesn't require a car.



1-trockleyroad-southyarra.com

2 1 1

Auction Saturday 17th June at 10.30am

Matt Giulieri 0407 851 206

Vanessa Pleasance 0413 801 151

1111 High Street Armadale

9822 9999 mwone.com.au


MARSHALLWHITE
ONE

Disclaimer: Information provided is believed to be accurate as at the date of printing, no responsibility is taken for any errors or omissions. It is your responsibility to obtain independent, professional advice. Personal information collected from you is for security purposes to contact you should the property sell prior to auction. We may use this information to provide you with other real estate services including referrals to authorized financial services' providers. Visit our website at www.mwone.com.au for our privacy policy.