




MARSHALLWHITE

11 New Street
Armadale



Classic Charm, Contemporary Style

Behind the traditional charm of this freestanding Victorian block-fronted façade, the light-filled interior spaces brilliantly combine character rich period features with contemporary style. Baltic pine floors in the hallway lead to 2 gorgeous bedrooms with open fires & built in robes & a stylish bathroom. Polished concrete floors flow through the living/dining room & gourmet kitchen opening to a private decked north-facing courtyard. In a quiet pocket near Victory Square, Armadale Station, Toorak Station, Beatty Avenue Village, High St shops, cafes & trams and schools, it includes an alarm, heating/cooling & Euro-laundry.

11newstreet-armadale.com

2 1

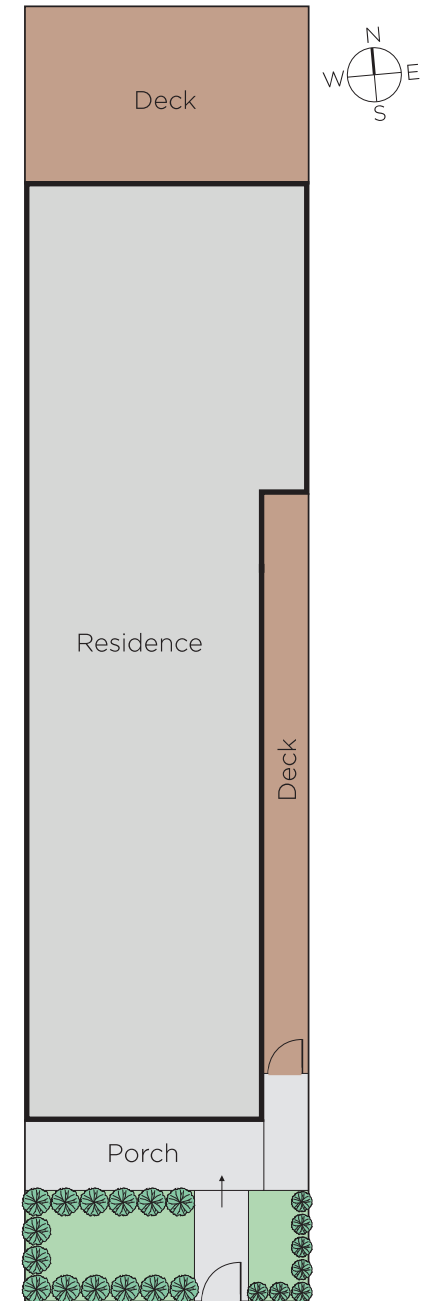
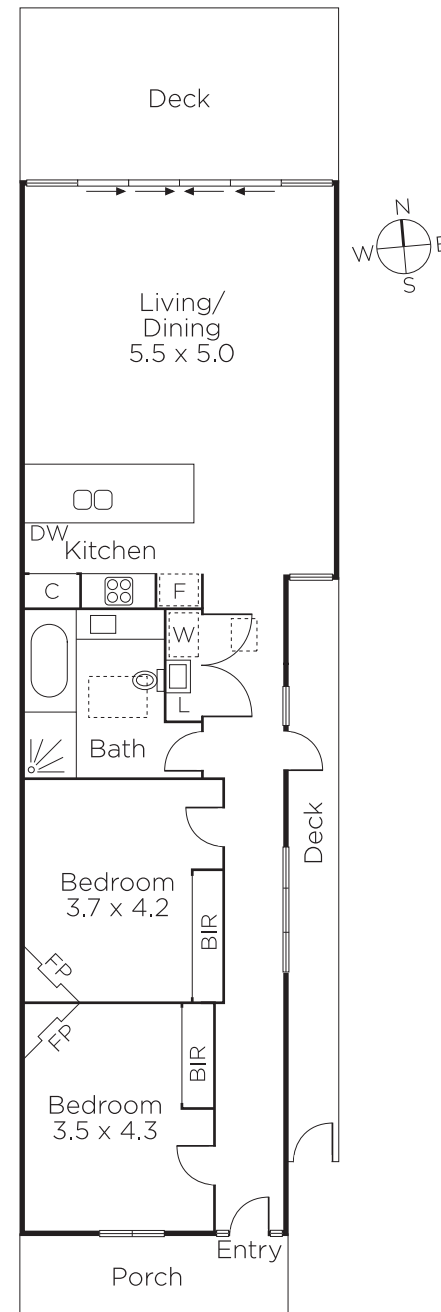
Auction Saturday 17th February at 11.30am

Madeline Kennedy
0411 873 913

David Volpato
0414 701 983


MARSHALLWHITE

1111 High Street, Armadale



Disclaimer: Information provided is believed to be accurate as at the date of printing, no responsibility is taken for any errors or omissions. It is your responsibility to obtain independent, professional advice. Personal information collected from you is for security purposes and to contact you should the property sell prior to auction. We may use this information to provide you with other real estate services including referrals to authorised financial services providers. Visit our website at www.marshallwhite.com.au for our privacy policy.