




MARSHALLWHITE

11 Meyer Court
Brighton East



Single Level Style and Courtyard Tranquility

Superbly renovated home is a hidden wonder in the Gardenvale Primary School zone, with single-level spaciousness and a cul de sac address. Four-bedroom design excels with north-facing living areas, Justine Carlisle-designed garden, and excellent zoning. Every room is stylish and inviting, including the parents' retreat with big ensuite and private deck. Plantation shutters, timber floors, contemporary lighting, Miele appliances and marble tiling add a luxe edge. Expansive deck with built-in seating, grassed play space, and nothing to do but love this beautiful home and first-class location near Bay St and Landcox Park.

4 2 2

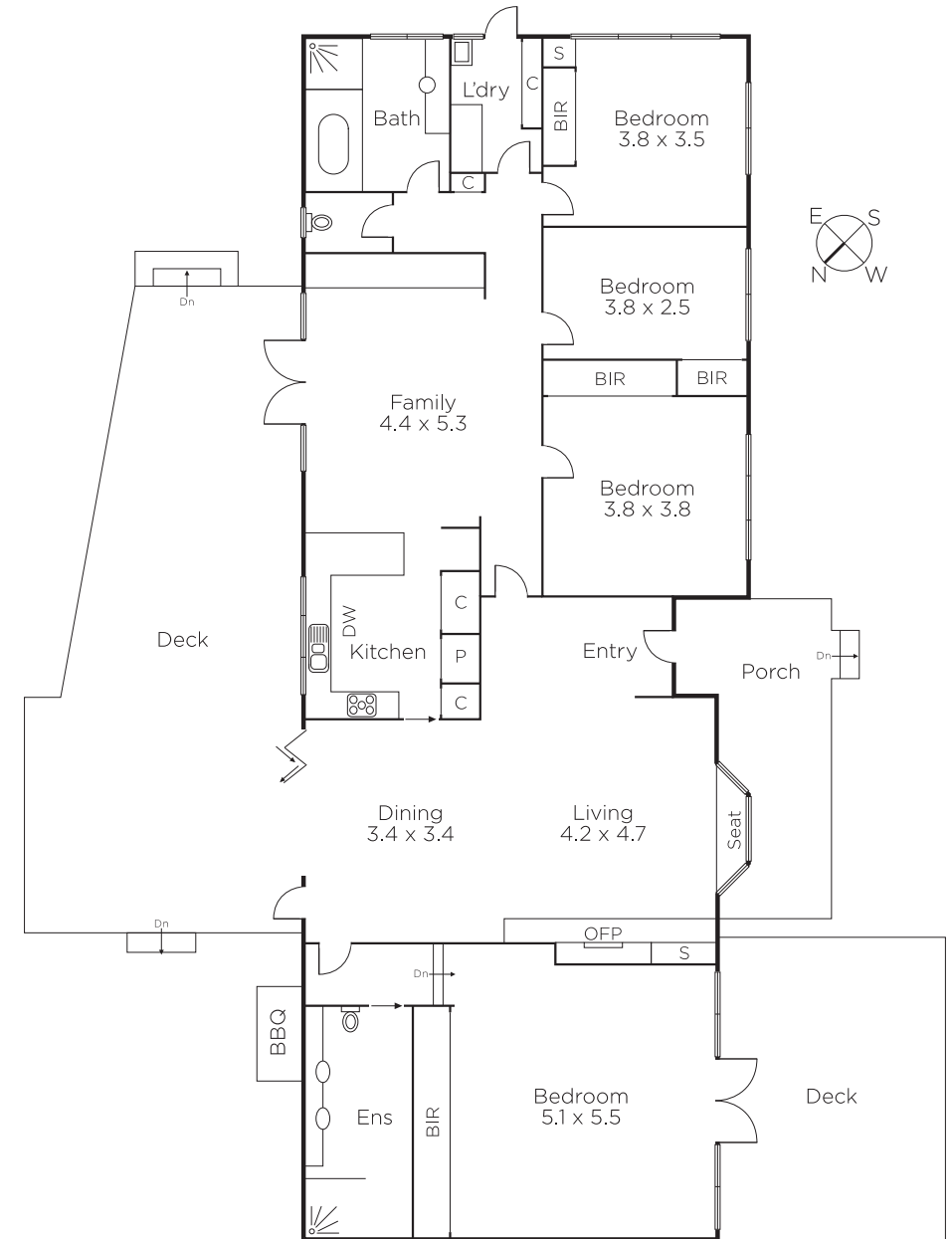
Auction Saturday 11th August at 1.30pm

Barb Gregory
0419 568 370

Alyce Fleming
0499 082 614

MARSHALLWHITE

225 Bay Street, Brighton



Disclaimer: Information provided is believed to be accurate as at the date of printing, no responsibility is taken for any errors or omissions. It is your responsibility to obtain independent, professional advice. Personal information collected from you is for security purposes and to contact you should the property sell prior to auction. We may use this information to provide you with other real estate services including referrals to authorised financial services providers. Visit our website at www.marshallwhite.com.au for our privacy policy.