



END
2P
AREA


MARSHALLWHITE

1/1 Hood Street
Mont Albert



The Essence of Low Maintenance Living

A distinctive façade introduces this stylish town residence which enjoys its own street frontage & low maintenance gardens; offering an enviable low maintenance lifestyle. The immaculately presented interior features a wide polished timber foyer, sitting room, powder room and north-facing informal living serviced by a sleek S/S kitchen with adjacent laundry flowing to a sun-drenched deck and courtyard garden - perfect for indoor/outdoor entertaining. Upstairs opens to a generous landing, 3-bedrooms all with WIRs, main with ensuite plus a sparkling family bathroom. Incls. alarm, remote gates/double garage.

1-1hoodstreet-montalbert.com

3 2 2

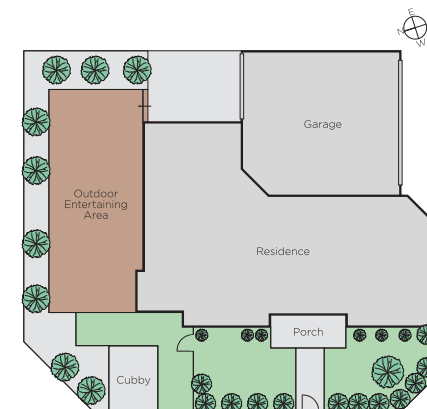
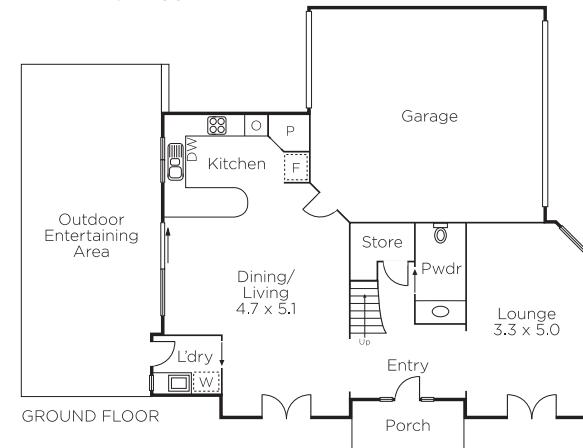
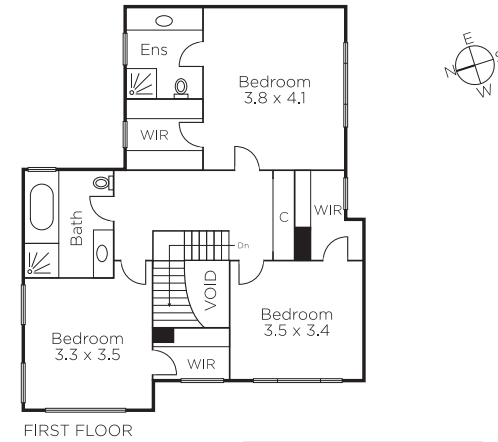
Auction Saturday 19th May at 11.30am

Davide Lettieri
0414 018 707

Grayson Rayner
0433 654 744


MARSHALLWHITE

801 Glenferrie Road, Hawthorn



Disclaimer: Information provided is believed to be accurate as at the date of printing, no responsibility is taken for any errors or omissions. It is your responsibility to obtain independent, professional advice. Personal information collected from you is for security purposes and to contact you should the property sell prior to auction. We may use this information to provide you with other real estate services including referrals to authorised financial services providers. Visit our website at www.marshallwhite.com.au for our privacy policy.