



MARSHALLWHITE

11 Hobsons Bay Parade
Port Melbourne



A Serene, Stylish Sanctuary

Peacefully situated in a leafy pocket opposite parkland and near the beach, Beacon Cove and Bay St shops, light rail and schools, this stunning contemporary residence's sun-drenched and stylish dimensions deliver an idyllic family lifestyle. A marble foyer introduces a spacious living/dining room with gas pebble fire, gourmet kitchen and living room opening to a lush private north garden. Natural light streams through the generous main bedroom with balcony, built in robe and en-suite, two additional bedrooms with built in robes and bathroom.

11hobsonsbayparade-portmelbourne.com

3 2 2

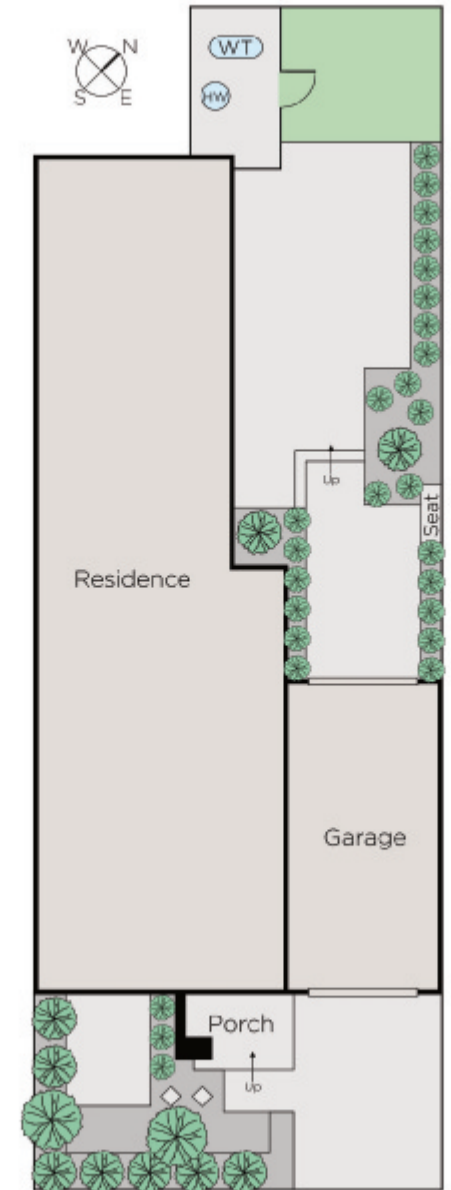
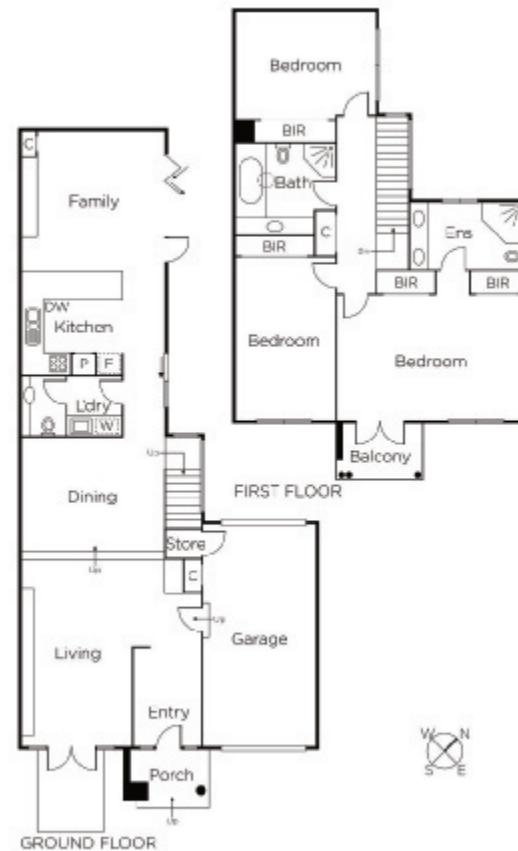
Private Sale

Michael Paproth
0488 300 800

Brendan Coburn
0433 262 876


MARSHALLWHITE

101 Dundas Place, Albert Park



Disclaimer: Information provided is believed to be accurate as at the date of printing, no responsibility is taken for any errors or omissions. It is your responsibility to obtain independent, professional advice. Personal information collected from you is for security purposes and to contact you should the property sell prior to auction. We may use this information to provide you with other real estate services including referrals to authorised financial services providers. Visit our website at www.marshallwhite.com.au for our privacy policy.