



MARSHALLWHITE

1/1 Gatis Street
Glen Iris



Period Style meets Contemporary Living

Combining the best in traditional period styling with today's modern family lifestyle requirements - this two-storey Tudor-style original clinker brick town residence features a pretty front garden preceding a refurbished interior with high ceilings, a central entrance hall & Jarrah polished timber floorboards leading to a formal sitting room, 3-bdrms, downstairs main with BIRs & ensuite & family bathroom. Plus a spacious informal living & dining area incorporating a stylish granite/Euro kitchen overlooking a north-east facing courtyard with water feature. Incls alarm, v/intercom,d/heating/cooling & rem/double garage.

1-1gatisstreet-gleniris.com

3 2 2

Auction Saturday 24th March at 1.30pm

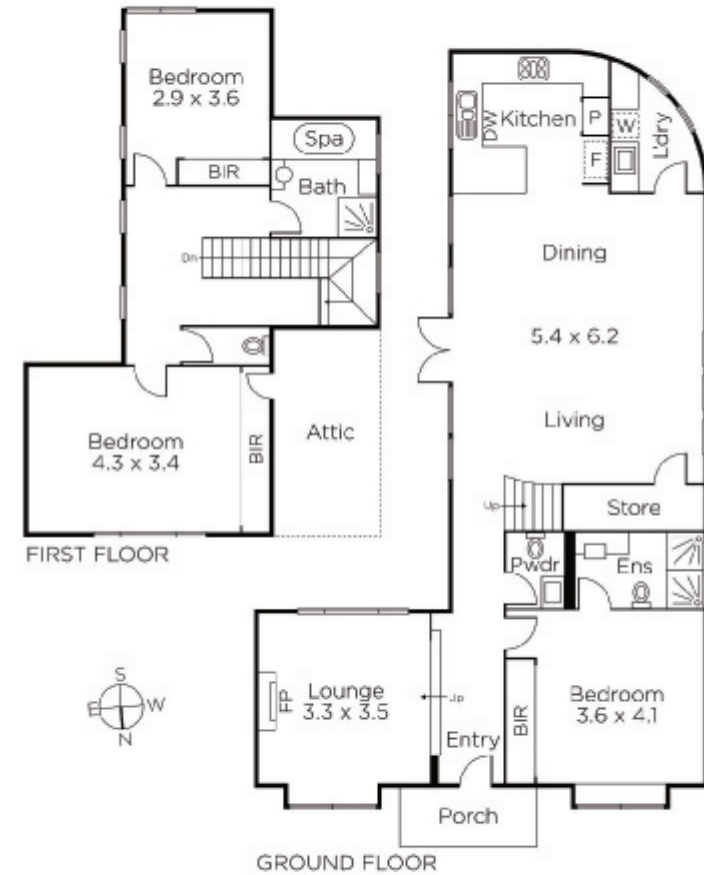
Hamish Tostevin
0408 004 766

Kane Penhalluriack
0406 556 445

James Tostevin
0417 003 333


MARSHALLWHITE

801 Glenferrie Road, Hawthorn



Disclaimer: Information provided is believed to be accurate as at the date of printing, no responsibility is taken for any errors or omissions. It is your responsibility to obtain independent, professional advice. Personal information collected from you is for security purposes and to contact you should the property sell prior to auction. We may use this information to provide you with other real estate services including referrals to authorised financial services providers. Visit our website at www.marshallwhite.com.au for our privacy policy.