




MARSHALLWHITE

11 Black Street
Brighton



Single-Level Quality Close to Church St

Look to the future with easy living, big potential and a brilliant location around the corner from Church St. Private and superbly designed single level townhouse is in pristine condition and north-facing. Created by acclaimed builder and designer Gerhard Sommer, his trademark use of natural light and relaxed style is on show in every room. Lounge and dining areas open onto a courtyard garden, the family room has a leafy view, and the kitchen is updated and open-plan. Main bedroom features a dressing area and ensuite, and there's the option of a study/ third bedroom. Air ventilation system, double garage, and scope for luxury STCA.

11blackstreet-brighton.com

3 2 2

Auction Saturday 2nd December at 11.30am

Barb Gregory 0419 568 370

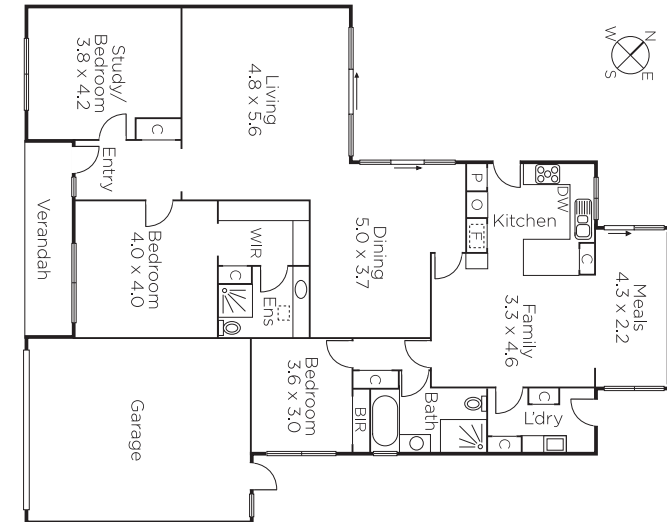
Myles Howell 0413 100 700

Alyce Fleming 0499 082 614

225 Bay Street Brighton

marshallwhite.com.au


MARSHALLWHITE



Disclaimer: Information provided is believed to be accurate as at the date of printing, no responsibility is taken for any errors or omissions. It is your responsibility to obtain independent, professional advice. Personal information collected from you is for security purposes and to contact you should the property sell prior to auction. We may use this information to provide you with other real estate services including referrals to authorised financial services' providers. Visit our website at www.marshallwhite.com.au for our privacy policy.