



  
MARSHALLWHITE

11 Asquith Street  
Kew





## Realise the Potential and Reap the Profits

Structurally complete, with all of the hard work done, this imaginatively extended 1930's house is offered for sale "as is", representing a rare opportunity for the next owner to complete the dream and capitalise on its full potential while saving several hundred thousand dollars. Offered in virtually liveable condition, together with all plans and most of the materials required to finish, it offers a lucrative opportunity to complete to one's own taste at considerable savings.

Land size: 700sqm (approx.)

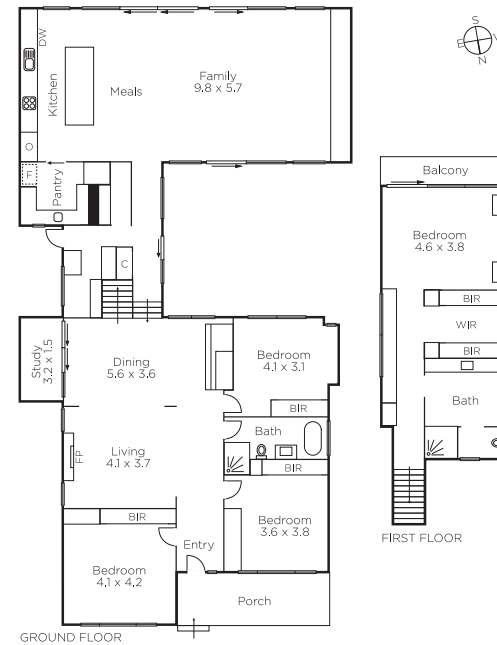
4 2 2

Auction Saturday 20th October at 2.30pm

**Doug McLauchlan**  
0418 377 718

**Stephen Gough**  
0439 844 855

**Cameron Edgoose**  
0438 064 212



**MARSHALLWHITE**

801 Glenferrie Road, Hawthorn

Disclaimer: Information provided is believed to be accurate as at the date of printing, no responsibility is taken for any errors or omissions. It is your responsibility to obtain independent, professional advice. Personal information collected from you is for security purposes and to contact you should the property sell prior to auction. We may use this information to provide you with other real estate services including referrals to authorised financial services providers. Visit our website at [www.marshallwhite.com.au](http://www.marshallwhite.com.au) for our privacy policy.