




MARSHALLWHITE
ONE

108/38 Nott Street
Port Melbourne



The Beach is within Reach

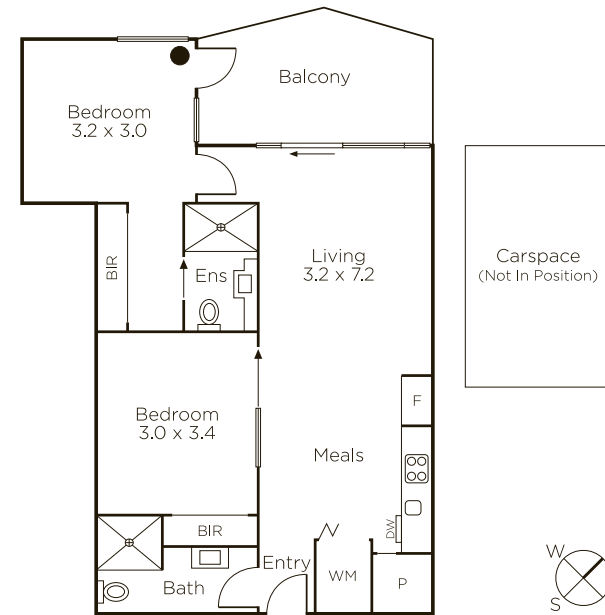
An ultra-convenient, low maintenance lifestyle is paramount in this chic two bedroom apartment situated on the first floor of a stylish boutique complex acclaimed for its eye catching façade, interior design and communal rooftop terrace with 360 degree views. Whilst boasting a brilliant position just metres from the beach, Bay Street attractions & transport options. A sleek, crisp white interior features a light and spacious ambience with contemporary timber floors through a generous open-plan living and dining area which includes a smart CaesarStone and prestige Miele kitchen opening to a balcony delivering space for indoor/outdoor entertaining. Plus two good-sized bedrooms with BIRs, main with ensuite and a sparkling bathroom with concealed laundry. Other features of this must see apartment include video intercom entry, lift access, R/C air conditioner, quality fixtures/fitings and secure parking.

108-38nottstreet-portmelbourne.com.au 2 2 1

Private Sale

Bradley Steinbach 0403 539 038
Justin Hold 0411 669 161

101 Dundas Place Albert Park
9822 9999 mwone.com.au



Disclaimer: Information provided is believed to be accurate as at the date of printing, no responsibility is taken for any errors or omissions. It is your responsibility to obtain independent, professional advice. Personal information collected from you is for security purposes to contact you should the property sell prior to auction. We may use this information to provide you with other real estate services including referrals to authorized financial services providers. Visit our website at www.mwone.com.au for our privacy policy.