



MARSHALLWHITE

108 Robinson Road  
Hawthorn





108





## Bright and Beautiful Family Luxury

Graced with bright open spaces, tranquil designer gardens and a prized Scotch Hill position, this exceptional family home boasts three stunning living areas including a huge open-plan kitchen/dining and living, fabulous master with ensuite/WIR and a wonderful outdoor haven with solar-heated pool and cabana. Highly functional with an excellent floor plan and extensive features including travertine floors, double garage, outdoor bathroom, wraparound deck, ducted heating and air conditioning. Great proximity to Scotch College, Kooyong Village, Auburn South Primary and Glenferrie Road. Land size: 696sqm approx.

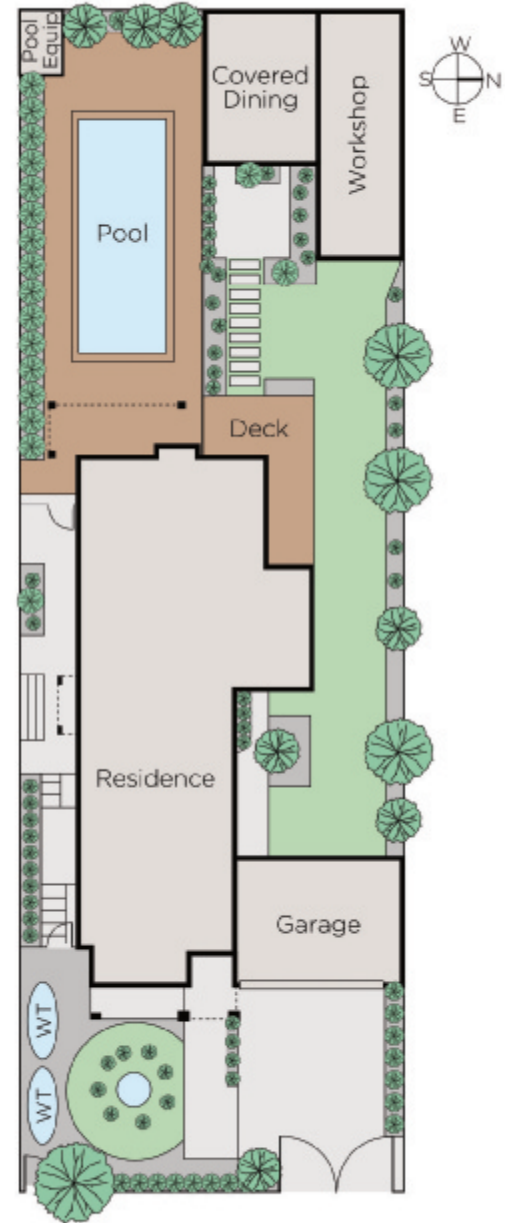
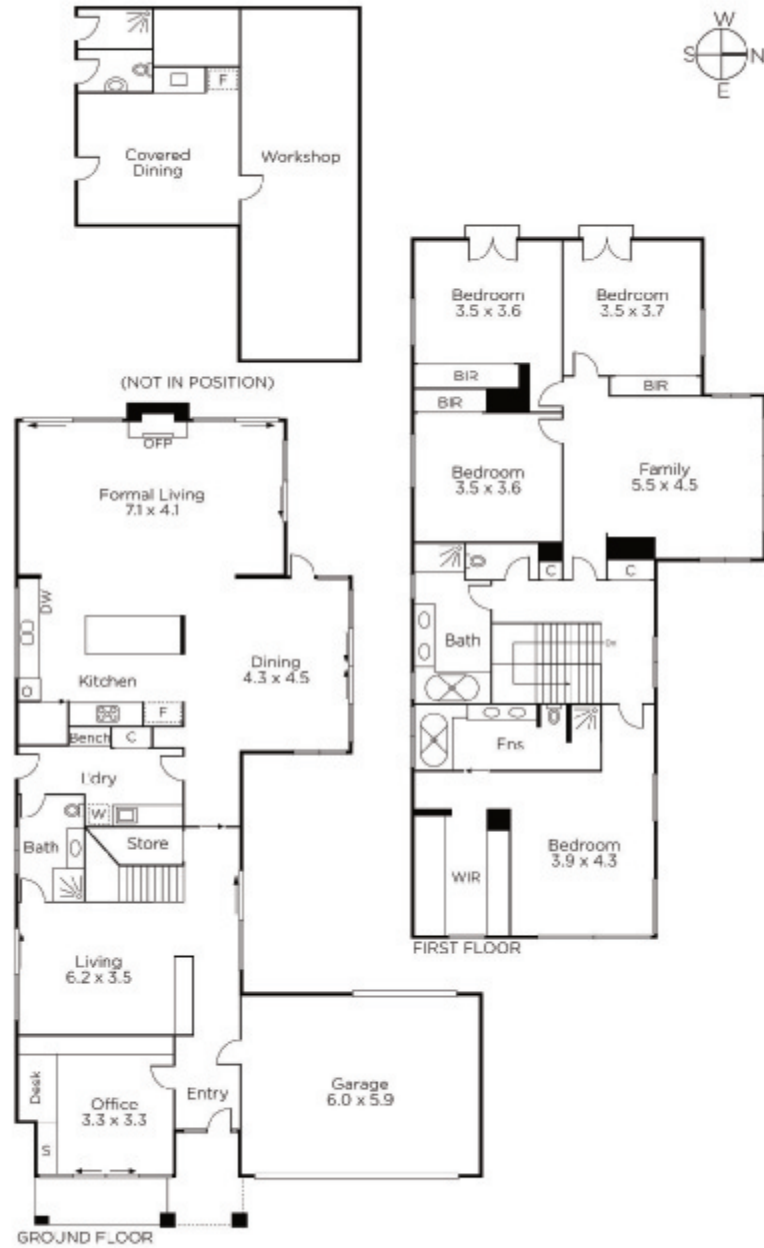
4  3  2 

Auction Saturday 2nd March at 10.30am

**Mike Beardsley**  
0476 777 004

**Chris Barrett**  
0412 927 409

  
**MARSHALLWHITE**  
801 Glenferrie Road, Hawthorn



Disclaimer: Information provided is believed to be accurate as at the date of printing, no responsibility is taken for any errors or omissions. It is your responsibility to obtain independent, professional advice. Personal information collected from you is for security purposes and to contact you should the property sell prior to auction. We may use this information to provide you with other real estate services including referrals to authorised financial services' providers. Visit our website at [www.marshallwhite.com.au](http://www.marshallwhite.com.au) for our privacy policy.