




MARSHALLWHITE
ONE

107/629 Canterbury Road
Surrey Hills



Sleek and Sophisticated, Walk to the Village

Wonderfully positioned just metres from the village-like café culture of Union Rd and the easy city access of Surrey Hills Railway Station, this immaculate and contemporary, single-bedroom apartment is a sophisticated urban home with a first class lifestyle offering to suit new market entrants and savvy investors. Natural light streams into open-plan living through a sunny balcony, whilst a Miele-equipped stone-topped kitchen allows you to cook in gourmet style in this efficiently designed home with substantial robes in the bedroom and a fully-tiled bathroom. Accessed securely via video entry, with secure basement parking and elevator access, the home also features a storage cage, European laundry and split system heating/cooling. Aside from the Union Rd café scene, you also have Maling Rd just around the corner and Surrey Gardens within easy walking distance.

107-629canterburyroadsurreyhills.com 1 1 1

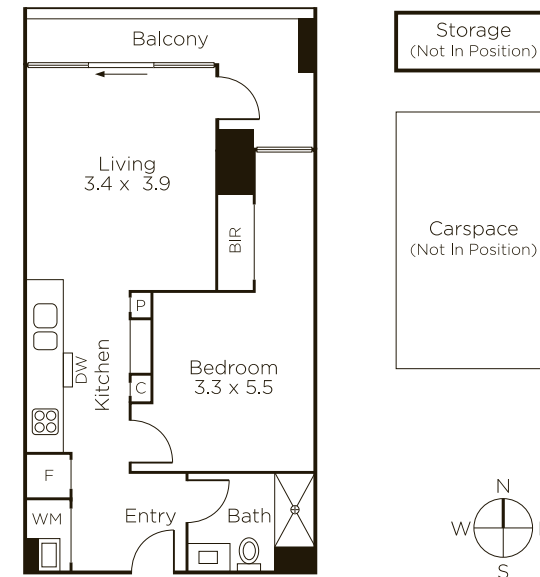
Private Sale

Danny See 0402 533 853

Kane Penhalluriack 0406 556 445

801 Glenferrie Road Hawthorn

9822 9999 mwone.com.au



Disclaimer: Information provided is believed to be accurate as at the date of printing, no responsibility is taken for any errors or omissions. It is your responsibility to obtain independent, professional advice. Personal information collected from you is for security purposes to contact you should the property sell prior to auction. We may use this information to provide you with other real estate services including referrals to authorized financial services providers. Visit our website at www.mwone.com.au for our privacy policy.