




MARSHALLWHITE
ONE

106/2 Constance Street
Hawthorn East



Stylish Living Beside Anderson Park

Quality is paramount in this chic two bedroom apartment situated on the first floor of "Constance" a stylish boutique complex acclaimed for its eye catching façade, immaculate design and interiors - whilst boasting a prestigious location metres from the beautiful Anderson Park. A sleek, crisp white interior features a light and spacious ambience with wide engineered oak floors through a generous open-plan living and dining area which includes a study nook and smart CaesarStone and prestige Miele kitchen - opening to a balcony with City skyline glimpses. Plus two good-sized bedrooms with BIRs and a sparkling bathroom with concealed laundry. Other features of this must see apartment include video intercom entry, lift access, ducted heating and cooling, high quality fixtures and fittings plus one secure basement car space and storage locker.

106-2constancestreet-hawthorneast.com 2 1 1

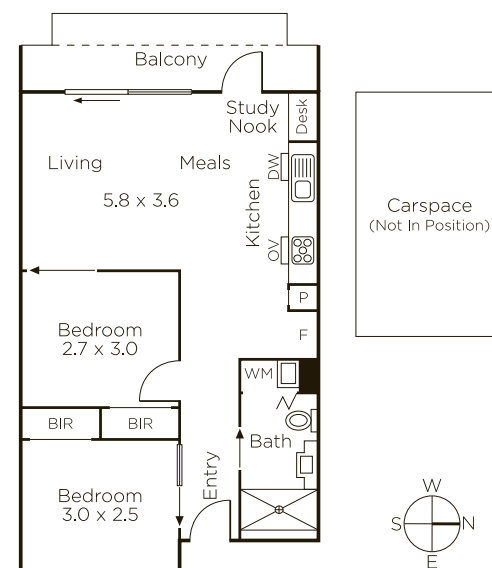
Auction Saturday 12th October at 10am

Kane Penhalluriack 0406 556 445

Danny See 0402 533 853

801 Glenferrie Road Hawthorn

9822 9999 mwone.com.au



Internal Area: 60sqm (approx.)

Balcony Area: 9sqm (approx.)

MARSHALLWHITE
ONE

Disclaimer: Information provided is believed to be accurate as at the date of printing, no responsibility is taken for any errors or omissions. It is your responsibility to obtain independent, professional advice. Personal information collected from you is for security purposes to contact you should the property sell prior to auction. We may use this information to provide you with other real estate services including referrals to authorized financial services' providers. Visit our website at www.mwone.com.au for our privacy policy.