




MARSHALLWHITE
ONE

10/24 Muir Street
Hawthorn



Riverside Tranquility, Terrific City Access

Combining a peaceful riverside position with incredible city convenience, this large, light and bright two bedroom apartment gives you the best of both worlds and is differentiated from most other apartments, even in this block.

Ready to be moved-into or let, the home carries an enticing opportunity to introduce your own style, if needed, as the bright kitchen / meals has room for a table and is independent to a large lounge / dining that enjoys a north-facing balcony and garden outlooks. With its own secure intercom entry and undercover parking conveniently adjacent to the front door, the home features robes in each bedroom and a large bathroom / laundry.

What a location! Just metres from the Yarra River and its endless trails, you can also walk to Victoria Gardens for shops, cafes, restaurants and even cinemas, plus you have plenty of city-bound transport, Kew Junction and Burwood Rd all within easy reach as well.

10-24muirstreet-hawthorn.com

2 1 2

Auction Saturday 16th September at 10.30am

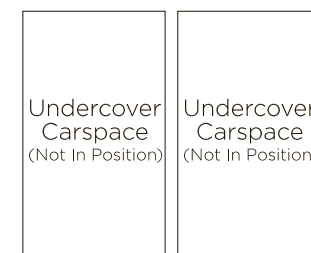
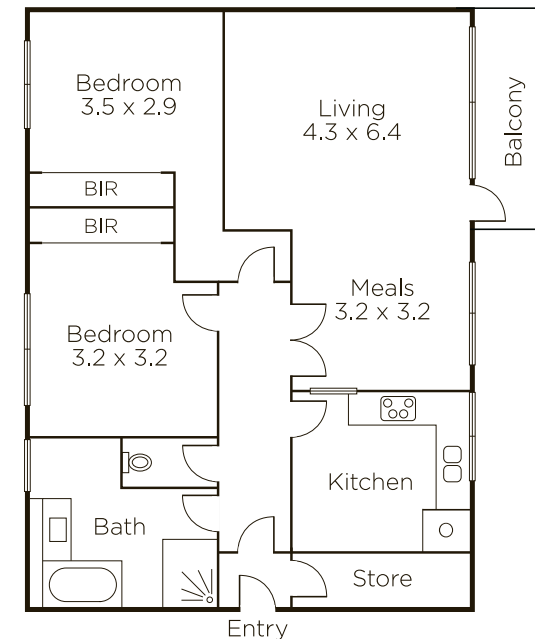
Luke Saville 0437 720 806

James Hill 0402 421 154

801 Glenferrie Road Hawthorn

9822 9999 mwone.com.au


MARSHALLWHITE
ONE



Disclaimer: Information provided is believed to be accurate as at the date of printing, no responsibility is taken for any errors or omissions. It is your responsibility to obtain independent, professional advice. Personal information collected from you is for security purposes to contact you should the property sell prior to auction. We may use this information to provide you with other real estate services including referrals to authorized financial services providers. Visit our website at www.mwone.com.au for our privacy policy.