



120


MARSHALLWHITE
ONE

102/120 Hotham Street
St Kilda East



Bold and Sunny Carlisle Sophistication

A sophisticated and state-of-the-art urban apartment, within metres of all the thriving action on Carlisle St, this large, two bedroom home highlights cool clean lines, a sunny northern-orientation and bold designer styling making it the perfect base for your inner-suburban lifestyle aspirations. A contemporary open-plan kitchen / meals / living is appointed with superior Bosch appliances, striking stone benches and a sunny north-facing balcony, whilst the master bedroom enjoys the luxury of a designer ensuite. Secure with video entry, basement parking and elevator access with storage cage, the home also offers large floor-to-ceiling mirrored robes in both bedrooms, reverse cycle air conditioning, rich dark timber floors and sheer microfiber window coverings. This dynamic urban setting puts all of Carlisle St's shops, countless bars, restaurants and cafes all within easy walking distance, as well as Balaclava Railway station and city-bound trams.

102-120hothamstreet-stkildaeast.com 2 2 1

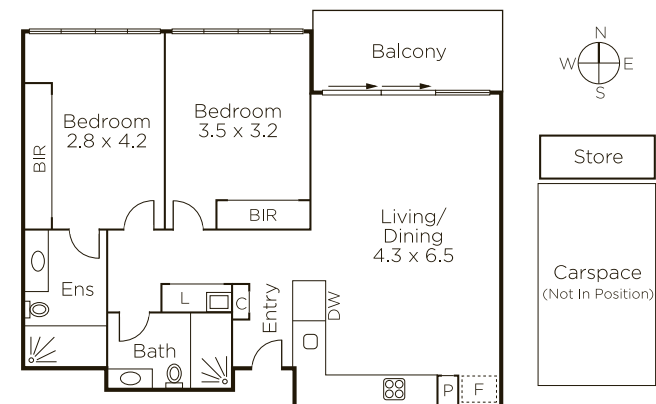
Auction Saturday 20th October at 10.30am

Joseph Ben-Danan 0408 135 948

1111 High Street Armadale

Bradley Steinbach 0403 539 038

9822 9999 mwone.com.au



MARSHALLWHITE
ONE

Disclaimer: Information provided is believed to be accurate as at the date of printing, no responsibility is taken for any errors or omissions. It is your responsibility to obtain independent, professional advice. Personal information collected from you is for security purposes to contact you should the property sell prior to auction. We may use this information to provide you with other real estate services including referrals to authorized financial services providers. Visit our website at www.mwone.com.au for our privacy policy.