



hello




MARSHALLWHITE
ONE
102/11 Hillingdon Place
Prahran



Sensational Warehouse Apartment

This vast, open and light-filled, two bedroom apartment is a flawless warehouse conversion that brings an authentic and gritty industrial design edge to this highly popular Chapel St locale. Architecturally creative with towering concrete ceilings and huge windows, this outstanding home overlooks an exciting streetscape that includes Hanoi Hannah, wonderful bars and is just metres from an amazing selection of Melbourne's favourite bars, cafes, restaurants and shops. A lofty sense of spaciousness prevails as the SMEG-equipped kitchen/meals/living looks out at High St - a perspective that is as distinctive as the home itself. Brilliant for storage and highly secure, there are robes in each bedroom, a particularly vogue bathroom and a European laundry, as well as secure video entry, basement parking and elevator access.

102-11hillingdonplace-prahran.com

2 1 1

Auction Saturday 27th May at 12.30pm

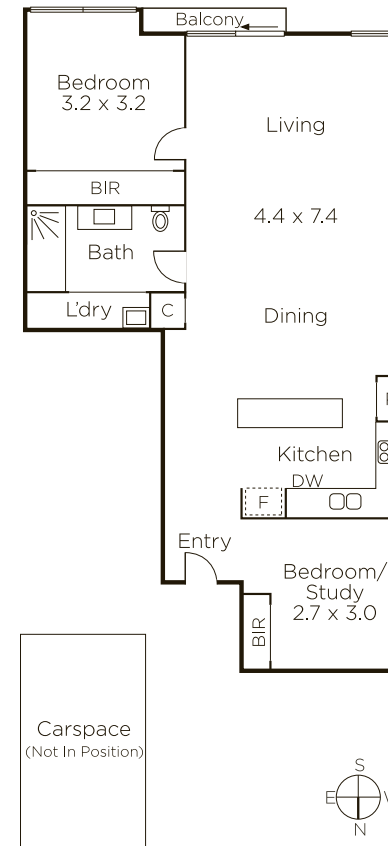
Matt Giulieri 0407 851 206

Lewien Gallus 0418 343 908

Fraser Cahill 0400 592 572

1111 High Street Armadale

9822 9999 mwone.com.au



MARSHALLWHITE
ONE

Disclaimer: Information provided is believed to be accurate as at the date of printing, no responsibility is taken for any errors or omissions. It is your responsibility to obtain independent, professional advice. Personal information collected from you is for security purposes to contact you should the property sell prior to auction. We may use this information to provide you with other real estate services including referrals to authorized financial services providers. Visit our website at www.mwone.com.au for our privacy policy.