




MARSHALLWHITE
ONE

10/208 Canterbury Road
Canterbury



Heritage-Listed Maling Lifestyle

The elegant transformation of this extraordinary, character-filled apartment into a unique 21st Century designer abode has been undertaken with the most respectful care of the fact that the 1889 constructed 'Canterbury Mansions' building is a slice of Marvellous Melbourne's history. Towering 3.6 metre ceilings create a remarkable sense of space and occasion, as an open-plan kitchen/dining/lounge combines period detail with terrific rooftop views and a backdrop of SMEG appliances, stone benches and soft close cabinetry, whilst the bathroom is fully-tiled with a huge shower. Additional features include secure video entry, rear parking and reverse cycle heating/cooling. You will relish the opportunity to immerse yourself in some of Maling Rd's renowned café culture and strip shopping, whilst Canterbury Gardens is a lovely backdrop for your outdoor recreation and Canterbury Railway Station promises easy city-commuting.

10-208canterburyroad-canterbury.com 2 1 1

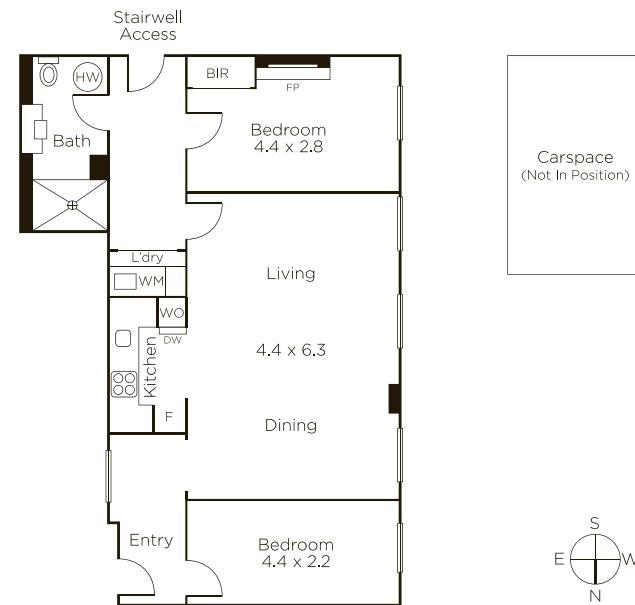
Expressions of Interest Close Tuesday 2nd July at 5pm

James Hill 0402 421 154

801 Glenferrie Road Hawthorn

Ash Sachdev 0402 425 661

9822 9999 mwone.com.au



MARSHALLWHITE ONE

Disclaimer: Information provided is believed to be accurate as at the date of printing, no responsibility is taken for any errors or omissions. It is your responsibility to obtain independent, professional advice. Personal information collected from you is for security purposes to contact you should the property sell prior to auction. We may use this information to provide you with other real estate services including referrals to authorized financial services providers. Visit our website at www.mwone.com.au for our privacy policy.