




MARSHALLWHITE

101/55 Chaucer Crescent
Canterbury



"Abingdon" overlooking Canterbury Gardens

Situated in the exclusive & tightly held "Abingdon" development, this rare offering provides the purchaser with a secure lifestyle that is not easy to find. Overlooking Canterbury Gardens, this 3 bed apartment enjoys a generous living area and a superbly appointed kitchen with European appliances and stone benchtops leading to an excellent balcony. The master bedroom has an ensuite & private balcony, plus the apartment offers two other double bedrooms with built in robes. Including family bathroom, laundry, lift access, secure intercom entry, central heating, cooling, two basement car parks and two storage cages.

3 2 2

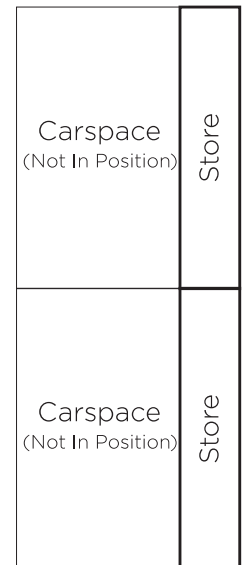
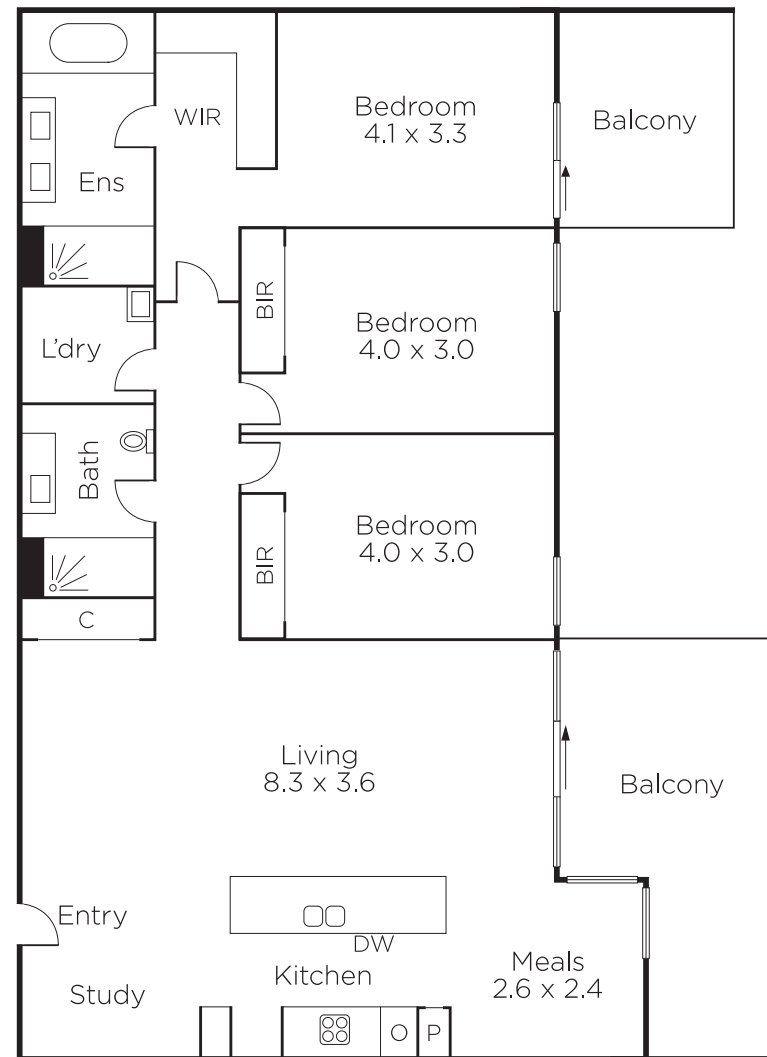
Auction Saturday 24th November at 10.30am

Kathy Malcolm
0416 279 966

Nicholas Franzmann
0412 247 175


MARSHALLWHITE

801 Glenferrie Road, Hawthorn



Disclaimer: Information provided is believed to be accurate as at the date of printing, no responsibility is taken for any errors or omissions. It is your responsibility to obtain independent, professional advice. Personal information collected from you is for security purposes and to contact you should the property sell prior to auction. We may use this information to provide you with other real estate services including referrals to authorised financial services providers. Visit our website at www.marshallwhite.com.au for our privacy policy.