



MARSHALLWHITE  
ONE

101/2 Cromwell Road  
South Yarra





## 'Baillie': Refined South Yarra Elegance

This two bedroom apartment is presented as new, within the highly coveted and boutique, 'Baillie' building. With a bespoke sense of designer style, the open-plan kitchen/ meals/ living spills easily out to a broad balcony that is suited for entertaining and quiet reflection, whilst a suite of Miele appliances compliments marble kitchen benches and volumes of soft close cabinetry, in a clear commitment to quality that extends also to the master bedroom ensuite and the central bathroom. Highly secure with video entry, basement parking, storage cage and elevator access. Poised to enjoy the very best of Chapel St, Commercial Rd and Hawksburn Village, the local café culture, restaurants, bars, strip shopping and nightlife, whilst there are city-bound trams and trains from Hawksburn Railway Station within metres and beautiful local parks.

101-2cromwellroad-southyarra.com

2 2 1

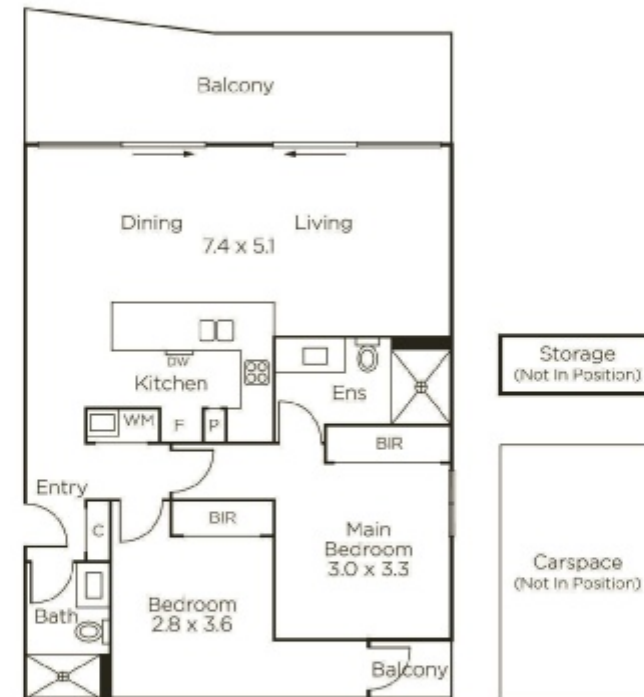
Auction Saturday 7th December at 10am

Jack Nicol 0400 774 428

James McCormack 0410 503 389

1111 High Street Armadale

9822 9999 mwone.com.au



  
MARSHALLWHITE  
ONE

Disclaimer: Information provided is believed to be accurate as at the date of printing, no responsibility is taken for any errors or omissions. It is your responsibility to obtain independent, professional advice. Personal information collected from you is for security purposes to contact you should the property sell prior to auction. We may use this information to provide you with other real estate services including referrals to authorized financial services providers. Visit our website at [www.mwone.com.au](http://www.mwone.com.au) for our privacy policy.