




MARSHALLWHITE

101/1565 Malvern Road
Glen Iris



"Turner Residences"

Only just completed, this lavishly appointed boutique residence showcases the finest in contemporary design and luxury in a desirable location close to Malvern Village, Gardiner station, trams and freeway access. Wide oak floors flow through the hallway to a state of the art kitchen and inviting living/dining room opening to a large covered north terrace. The main bedroom with north balcony, walk in robe and stunning en-suite enjoys its own space while two additional bedrooms with robes share a lavish bathroom. Includes video intercom, lift access, heating/cooling, laundry, storage cage and 3 basement car-spaces.

101-1565malvernroad-gleniris.com

3 2 3

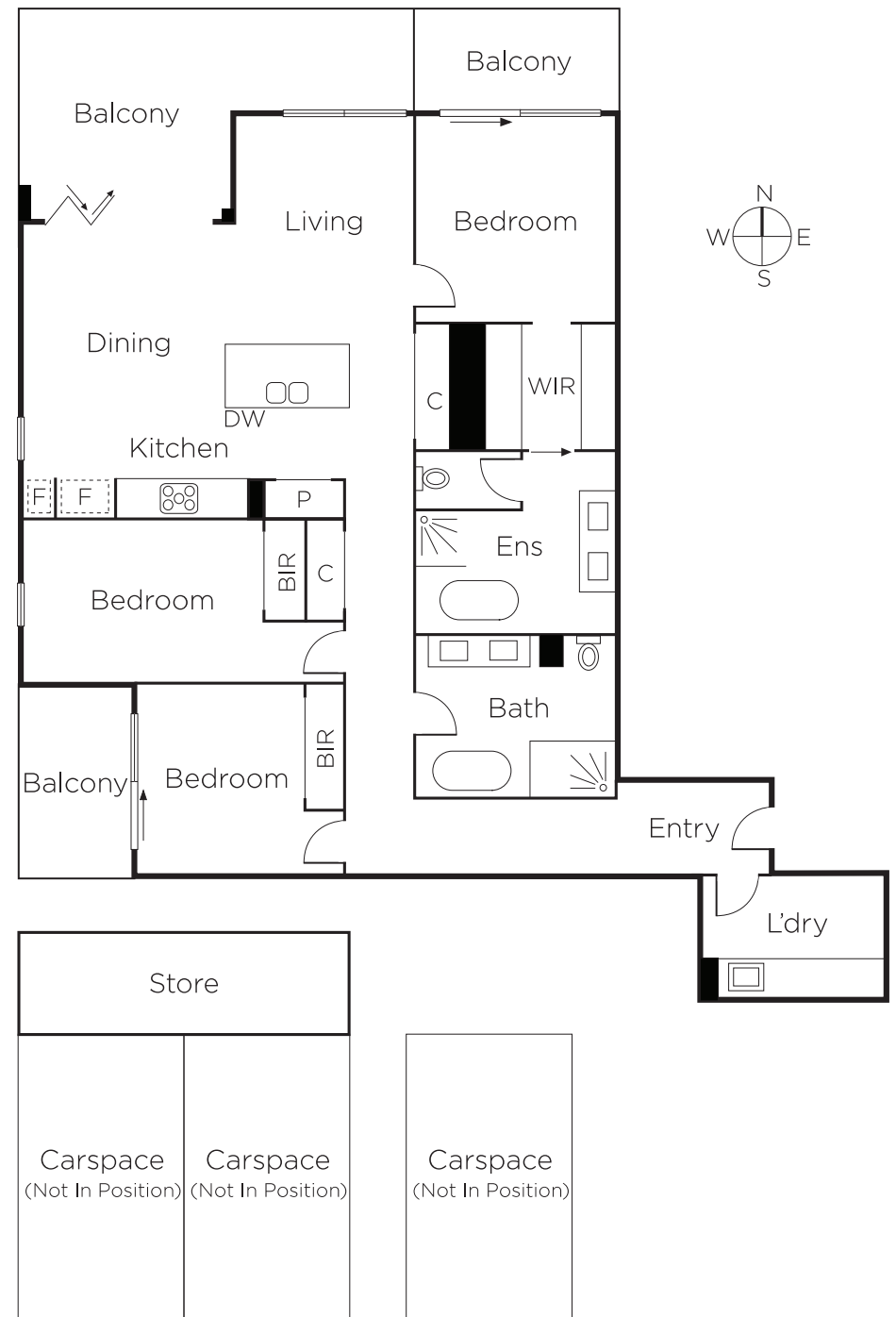
Auction Saturday 16th June at 2.30pm

John Manton
0411 444 930

Michael Martin
0478 011 216


MARSHALLWHITE

1111 High Street, Armadale



Disclaimer: Information provided is believed to be accurate as at the date of printing, no responsibility is taken for any errors or omissions. It is your responsibility to obtain independent, professional advice. Personal information collected from you is for security purposes and to contact you should the property sell prior to auction. We may use this information to provide you with other real estate services including referrals to authorised financial services providers. Visit our website at www.marshallwhite.com.au for our privacy policy.